

2009 ANNUAL REPORT

The Year Of The Donor



**Washington County
Community Foundation**

FOR GOOD. FOR EVER. FOR WASHINGTON COUNTY.

P.O. Box 50 • Salem, Indiana 47167 Phone: (812) 883-7334 www.wccf.biz



**Washington County
Community Foundation**

FOR GOOD. FOR EVER. FOR WASHINGTON COUNTY.

本年度的捐款

The Year of the Donor

Dear Friends of the Foundation,

2009 was such a whirlwind! Reeling from the effects of the Great Recession, watching the stock market continue to decline in the first quarter, and then slowly begin to recover.... Seeing the needs in our community grow as resources decline... The challenges were many, but thanks to you, our donors, the Foundation was able to continue a very aggressive grantmaking program.

We are committed to make the best use of the resources with which we have been entrusted. Many times that requires us to balance the needs of today with the needs of tomorrow... a very difficult responsibility. However, in 2009, we were able to issue grants exceeding \$300,000.00 while balancing today's needs with tomorrow's needs. Thanks to you, our donors.

Additionally, our contributions remained healthy. Thanks to you, our donors, we received over \$988,000.00 in contributions, an increase over 2008. This will enable us to continually increase our impact in Washington County.

So, we gratefully dedicate this annual report,

The Year of the Donor,

to you.

Because it is you, our donor, who makes great things possible through the Washington County Community Foundation.

Thank you for your continued support and for helping us to build a better tomorrow.

D. Jack Mahuron
President

Judy Johnson
Executive Director



Sam Barnett
Vice President



Shirly Batt



Adrian Brown



Dottie Brown



Rita Elliott



Tom Fihe



Judy Johnson
Executive Director



John D. Fultz



Bruce Grosvenor



Sally Hattabaugh



Sue Hawkins



Judy Hedrick



Jack Mahuron
President



Lindsey
Wade-Swift
Program Officer



John Mead



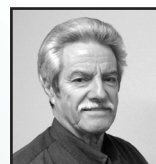
David Morris



John Roberts
Secretary



Pat Shrum



Oliver Sizemore
Treasurer



Jeff Souder



Beth Armstrong
Youth Coordinator



2009 Accomplishments

Asset Development

We received over \$988,000.00 in contributions (including estate gifts and grants.) In this economy, that is an outstanding number! We processed over 750 gifts and established 10 new funds. And, 100% of the Foundation staff are using payroll deduction to build named, endowed funds in the Foundation.

Grantmaking

Our grants paid in 2009 exceeded \$300,000.00. We experienced significant investment losses in 2008 which impacted the ability of many of our funds to issue grants in 2009. Fortunately, we had sizeable unrestricted reserves and we were able to supplement many of our designated payouts, so that our nonprofit partners could receive grants similar to 2008 levels.

Youth Development Movement

This is the completion of the third year for Youth First. A few accomplishments include: Starting the Youth First Cafes; Starting the Fathers Forever programming; Initiating the collaboration of local agencies to create options for community service sentences that are focused on improving the role of adults in the lives of children; Holding first Youth Summit; Increased conversations in community, especially on the political level, regarding the needs of our youth; Sponsorship of "A Perfect Reflection"; Starting Adult Snacktime networking opportunities for childcare providers.

Washington County Youth Foundation

The Youth Foundation continues to grow, both in numbers and activities. We are up to 20 members from all three school systems. Community service activities include: Taste of Salem; Christmas Assistance; Minis for Pennies fundraiser; Community Learning Center clean-up; Big Brothers Big Sisters; orphan relief in Haiti; and one new activity: Fundraising for the Animal Shelter.

Celebrating Women in Philanthropy

The Washington County Community Foundation, in partnership with four other community foundations, hosted the fifth annual Southern Indiana Women in Philanthropy Celebration. Rose Anderson was named Woman Philanthropist of the Year and Mindy Gunn was named Emerging Woman Philanthropist.

Education

As part of our continuing effort to improve the educational attainment of Washington County residents, we again provided all three school systems with targeted programming to help students prepare for post high school life, whether that is college, technical school, military service or immediate employment. We also continue to offer all families in Washington County free consultation on college costs and the ability to secure federal and state grants and financial aid.

Women's Giving Circle

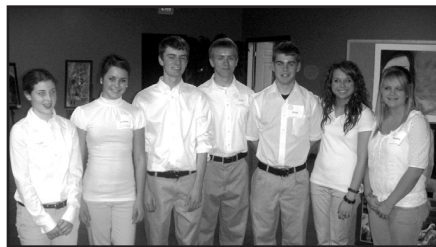
The second Giving from the Heart celebration was held in February, honoring the Food Bank. We raised over \$5,000.00, which was used to award grants from the second Women's Giving Circle grant cycle.

Community Learning Center Challenge

The challenges that we faced during the last quarter of 2009 concerning the Community Learning Center were significant and time consuming. At one time we were facing complete loss of funding to support educational services provided through the coordinators office. We secured funding through June 30, 2011, which includes a local match by the Foundation.



Saralee Shields and Paul Scifres accept the Giving From the Heart award on behalf of the Washington County Food Bank.



Washington County Youth Foundation members gave a helping hand at the Taste of Salem.



Rose Anderson, Woman Philanthropist of the Year and Dr. Mindy Gunn, Emerging Woman Philanthropist of the Year.

Helping students increase their abilities

The Foundation issues grants to Washington County classroom teachers in order to provide the “extra money” needed for that special classroom project. The grant money is issued from two funds:

- the D. Jack Mahuron Education Fund
- the Salem Community Schools Giving Tree Fund.

Salem Community Schools Giving Tree Funds are supported by teachers and staff through a payroll deduction program at Salem Community Schools. Both of these grant programs are designed to promote innovative classroom projects and increase each student’s individual abilities.

The special projects that have been supported include activities from basic reading skills to personal financial management.



Crystal Bartlett displays her “delicious” caterpillar in Melinda Hype’s class.



Lindsey Stewart reviews her foldable booklet, which she created in Kevin Keltner’s Biology class.



Wade Pennington and Samantha Pittman, students in Mr. Wade-Swift’s room, work on a video depicting the history of the Mayan culture. The software was purchased with a Mahuron grant.

Educational Support

\$3,800.00 was given to county schools in 2009 to support classroom teacher projects and build our students’ abilities.

Mahuron Education Grants Awarded and Funded in 2009

| | |
|--|------|
| Stacy Richardson | EWES |
| <i>Old Fashioned Family Fun Night</i> | |
| Leah Starrett | EWES |
| <i>Literature Circle Fund</i> | |
| Jenisa Collier | BSLE |
| <i>Listening Library</i> | |
| Melinda Hypes | SMS |
| <i>Butterflies</i> | |
| Kevin Keltner | EHS |
| <i>Foldables Tables</i> | |
| Jennifer Mills | SHS |
| <i>Foundations in Personal Finance</i> | |
| Bethany Hamilton | BSUE |
| <i>Turning the Page in the Digital Age</i> | |
| Clinton Blankenbaker | EWES |
| <i>BrainPOP in the Classroom</i> | |
| Jon-David Wade-Swift | SMS |
| <i>Making Presentations Come Alive</i> | |
| Darrell Myers | WWHS |
| <i>Media Production/Webcasting</i> | |
| Shari Dalton | EWES |
| <i>Picture This</i> | |
| Pam Scales | EWES |
| <i>LEGO Learning</i> | |
| RoseAnn Callahan | EWES |
| <i>LEGO Learning</i> | |



***The D. Jack
Mahuron Fund
for Education
made these
grants possible.***

Supporting the needs of our community

The Foundation holds 43 designated and agency funds. These funds were established by local benefactors for a specific cause. Many by individuals who have a passion for that particular charity. The grants from these funds are issued on an annual basis to the designated non-profit. The agency benefits from the Foundation's professional endowment management, freeing the agency's staff and board to concentrate on its programs and mission.

Most importantly, a designated endowed fund allows the benefactor to leave a lasting legacy to his/her favorite charity.



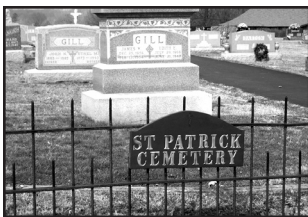
JP "Bob" Gill, pictured with his wife Helen, supports three charities with funds created through his estate: St. Patrick Church and Cemetery, St. John Homeless Shelter and the Washington County Food Bank.



Charles, a former resident of St. John Center for Homeless Men, moves into his own home.



Bob Holler unloads a truckload of canned goods at the Food Bank.



St. Patrick Cemetery



Residential Recovery Program at St. John Center for Homeless Men.

In 2009 the Washington County Community Foundation issued over \$149,000.00 from designated and agency funds to non-profits, working hard to improve our community.

Awareness Washington County
Blue River Baptist Church
Blue River Baptist Church Cemetery
Blue River Friends Church
and Cemetery
Blue River Services
Bunker Hill Cemetery
Bunker Hill Senior Citizens
Canton United Methodist Church
Cavetown Church
Church of Latter Day Saints
Council on Foundations
East Washington Dollars for Scholars
First Baptist Church
First Christian Church
Free and Accepted Masons Salem
Lodge #21
Friend's of Beck's Mill
Girl Scouts
Hardinsburg Senior Citizens
Hicksite Church and Cemetery
Hoosier Uplands
Humane Society
Indiana Grantmaker's Alliance
Indiana University-SE
Ivy Tech State College
John Hay Center
Mt. Tabor Christian Church
Olive Branch Cemetery
Olive Branch Primitive Baptist Church

Order of Eastern Star, Salem Chapter
Pekin Senior Citizens
Riley's Play Place
Salem Community Schools
Salem Education Foundation
Salem High School Band
Salem Presbyterian Church
Salem Public Library
Salem Water Department
Salem/Washington County Senior
Citizens
Shop-with-a-Cop
Smedley Scholarship Trust
St. Isidore The Farmer Catholic Church
St. John Center
St. Patrick Church
Stevens Museum
Sugar Creek Christian Church
Urban Beautification Committee-Salem
Washington Co. Cemetery Commission
Washington County Food Bank
Washington County Historical Society
Washington County Memorial Hospital
Washington County Veterans Memorial
West Washington School Corporation
Wonder Valley
YMCA

Caring for our Neighbors in Need

The Foundation holds 50 unrestricted and field-of-interest funds. These funds were established by caring individuals from our community who decided that their best gift to our community is to allow future generations of board members to determine the most pressing needs in Washington County and then use Touch Tomorrow and field of interest funds to address these needs.

The Washington County Community Foundation held four competitive grant cycles in 2009 (Women's Giving Circle, Youth Foundation, and two general cycles.) These grant cycles are funded through the Foundation's Touch Tomorrow funds, the Women's Fund and the Paul Ogle/Ed Baugh Youth Philanthropy Fund.

The Foundation holds two large community Touch Tomorrow funds and 30 individually named Touch Tomorrow funds and 18 field of interest funds.

In 2009 the Washington County Community Foundation issued over \$126,000.00 to local non-profits through proactive grantmaking and a competitive grant process.

List of grantees

Delaney Creek Longbeards

Friend's of Beck's Mill

Hoosier Hills PACT

Junior Achievement of Kentuckiana

Martinsburg Cemetery Association

Mt. Washington Cemetery Association

Murray and Associates

SOAR! of Washington County

Washington County CASA

Washington County Historical Society

YMCA

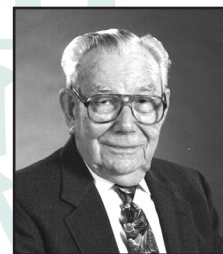
Youth First



Charlotte Martin



A grant from the Charlotte Martin Fund provided transportation for individuals who need assistance to travel out of county for cancer treatment.



Glenn Armstrong. A grant from the Glenn Armstrong Touch Tomorrow fund supported Junior Achievement activities at East Washington and Salem schools.



Haley Brown works on the computer at Biz Town, a Junior Achievement project.



Anthony Hart reviews his paperwork at Biz Town, a Junior Achievement project.



In April, Youth First began collaborating with the Indiana Youth Institute to provide quarterly luncheons (Youth First Cafés) to foster networking and cooperation between professionals working with youth and families in Washington County.

The Youth First Café is an opportunity for people who work with youth development in Washington County to come together to collaborate, network and strengthen individual efforts. Each meeting highlights a guest speaker or program as well as networking time. At the first Café in April, 48 people packed into the basement of Christie's and it was quickly decided that future Cafés would have to be held in a location which could accommodate our growing group.

Often when working with youth, professionals come to a situation that is outside their scope of experience or are not aware of local resources which serve the various needs of youth and families. Through the Youth First Café, one of the goals is to help create a web of support in Washington County for youth, parents and families. A stronger, more aware web of support will enable workers to serve Washington County to the best of their abilities, ensuring that we are connected so no child falls through the cracks but rather is caught by the web of support and raised up.



Professionals peruse the table of resources and special announcements.



Two participants in the midst of connecting!

Over the course of 2009, 89 different agencies, businesses and schools were able to connect through the Youth First Cafés creating a unified group of professionals intent on providing the best services to Washington County youth and families. Henry Ford said, "Coming together is beginning. Keeping together is progress. Working together is success."



First Café in the basement of Christie's with 48 participants.

We all have hopes and desires in life. For some it is to lose 10 pounds, for others it is to buy that new car and yet for some it is to make a difference in the lives of others. For the people participating in the Fathers Forever programs through Youth First it is a hope to be a stronger parent at the end of the program.

Thanks to a grant through Lawrence County, Youth First of Washington County began providing programs to strengthen fathers as part of a fatherhood initiative. The grant focuses on three aspects of fatherhood: economic stability, responsible parenting and strengthening relationships. Research shows that the quickest way to bring a child out of poverty is to help make the father economically stable. The Fathers Forever program through Youth First works to do just that.

Programs started in September with the introduction of a free Basic Computer Skills class. When this program launched the waiting list was so long that for the first three months two computer classes were offered each month to meet the demands of our citizens. The next program to be added to the roster was Inside Out Dads. This program works with dads who are incarcerated to help them identify the type of dad they want to be for their children when released. The program was rounded out in November with the addition of 24/7 Dads and Family Works. Like Inside Out Dads, 24/7 Dads works to help fathers identify the type of father they want to be for their children. Family Works provides an opportunity for families, regardless of their makeup, to come together and talk about their challenges while exploring solutions with a certified counselor.

Since its start in September, the Fathers Forever programs have served 87 parents. Additionally, the program has expanded its efforts and has setup a system where adults sentenced to community service can receive credit toward their sentence for participating in the fathers forever programs. The Fathers Forever program through Youth First works to not only provide hope to parents who may be struggling but also to children, families and our community as a whole.



Many of our donors are creating their legacy by planning their gifts to the Foundation in a very intentional way. They start funds while they are still with us, so that they can enjoy seeing the impact of their giving. And, many others create planned gifts through their estate plans, so that their legacy will live on long after they are gone.

Acorn Society The Acorn Society allows donors to build their funds a little at a time. Acorn funds are invested with the Foundation's portfolio to maximize their growth potential and donors add to their funds on a periodic basis. After a pre-determined event (usually when the fund reaches a certain level) the fund is removed from the Acorn Society and becomes a regular, grantmaking fund.

Morris Society The Morris Society is named after Robert and Clarice Morris, two fine people who gave the Washington County Community Foundation its first planned gift in the form of a Charitable Remainder Trust. The Morris Society recognizes those individuals who, through their estate planning, have chosen to leave a charitable gift on behalf of the community to the Washington County Community Foundation to benefit their favorite charitable organizations(s). Some donors plan to make a gift at the end of their lifetime through a provision in their wills. Others have made provisions for a gift by naming the Washington County Community Foundation as the beneficiary of a charitable remainder trust, a charitable lead trust, a life insurance policy, or an individual retirement account or plan, etc.

Regardless of the vehicle, each donor is planning an enduring legacy, knowing that the community will benefit forever and also knowing that the Washington County Community Foundation will carry out his or her charitable intentions for time without end. These plans are lovingly created and deployed with extreme dedication.

Acorn Funds

Bob Holler Scholarship Fund
Community Learning Center Fund
Crusade for Children Fund
Daniel Main Fund for Youth in Arts
David Beck Touch Tomorrow Fund
Edmund and Mary Drabek Scholarship Fund
Exchange Club Fund
First Youth First Fund
Holler/Myers Family Fund
Jim and Judy Johnson Touch Tomorrow Fund
John and Ginger Morris Touch Tomorrow Fund
John and Mary Mead Fund
Legacy Council Touch Tomorrow Fund
Literacy in Our Neighborhood Fund
Lois Price Fund
Oliver Sizemore Masonic Home Fund
Salem Schools Giving Tree Fund
Warren and Maxine Stewart Scholarship Fund
Washington County Aquatics Fund
W. Frank Cole, Jr. & Joanne (Jo)
Puckett Cole Scholarship Fund

Morris Society Members

Tim and Rose Anderson
Diana Armstrong
Mabel Gray
Gene and Judy Hedrick
Jim and Judy Johnson
Roy Lee
John Roberts
Garland A. and Norma Sue White
Jean Wilson

Just a few of our Morris Society Members



Garland
& Norma Sue
White



Jean Wilson



Roy
& Mae
Lee

Tomorrow's leaders are being cultivated today in the Washington County Youth Foundation. The Washington County Youth Foundation is a group of students from our county committed to making Washington County a better place to live. The Youth Foundation has up to 21 members; three sophomores, juniors and seniors from Eastern, Salem and West Washington and 12 others who can be sophomores, juniors or seniors at any school or are home schooled. They have been involved in our community and wish to continue that

involvement through their efforts in the Washington County Youth Foundation.

They learn about philanthropy by granting money to youth groups for community service projects. They also raise money for their fund with the Minis for Pennies project and they all complete many community service hours. They are honing their leadership skills through their activities in the Washington County Youth Foundation and are also making our community a better place.

Youth Foundation Grants

Girl Scout Troop 128

A Safe Place

Project Bedroom Beautification

Feed the Community

Project Head Start

Renovating the Animal Shelter



Counting coins



Members create posters for the Animal Shelter project

Community Service

Christmas Assistance Program

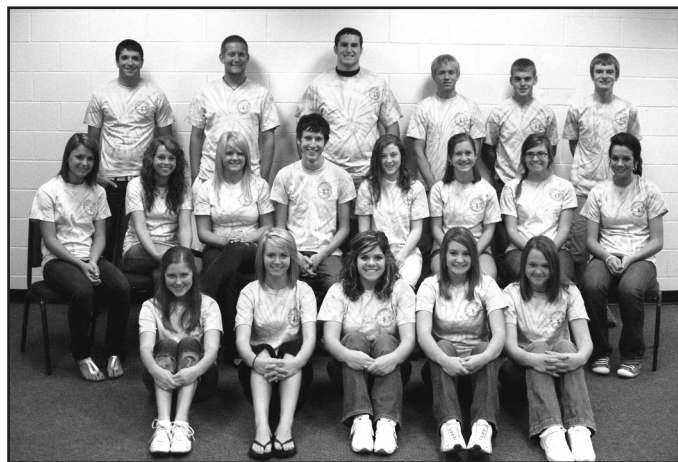
Taste of Salem Fundraiser

Washington County Community
Learning Center Clean-up Day

Big Brothers Big Sisters

Haiti Orphan Assistance

Fundraising for Animal Shelter



2009-2010 Youth First Members: **Row 1:** Sarah Fisher, Erica Ewen, Samantha Cusick, Paige Purkhiser, Emily Newcomb **Row 2:** Brittney Scifres, Caitlin Agan (Historian), Mallery Deaton (Treasurer), Aaron Johnson (Vice President), Tressie Barrett (President), Rachel Dalton (Secretary), Emily Olesh, Hayle Guetig, **Row 3:** Darren Guetig, Brandon Smith, Patrick Burks, Devon Grigsby, Jared Baird, Jordan Agan



Pursuing a college degree is getting harder and harder for many of our local students, as the cost of higher education continues to rise. Fortunately, we have had 38 donors establish funds in our Foundation for this very reason, to help our youth obtain a college degree.

It is a very rewarding, impactful cycle. For example, Audrey Mounts established a scholarship fund because she wanted to help kids get an education and teach them to give back. One of the many people who have benefited from Audrey's generosity was Ranessa Cooper. The amount of assistance Ranessa received from Audrey was very helpful to her, as she pursued her undergraduate degree. As a testament to the impact Audrey had, and as a way to give back, Ranessa, (now Dr. Ranessa Cooper) has established a fund in the Foundation as well. The legacy of helping others pursue their college dream continues.

**In 2009, the Foundation issued over \$57,000.00 in scholarships.
This does not include the Lilly Endowment Community Scholarship.**

2009 SCHOLARSHIP RECIPIENTS:

Lilly Endowment Community Scholars

Michael Baird
Jessica Tandy

Audrey Mounts

Paige Barger
Kate Burnett
Melody Dalton
Jacob Drescher
Amber Endris-Burris
Brooke Gatlin
Michael Grassmyer
Olivia Gregory
Katie Hawkins
Kendra Nice
Katherine Puckett
Andrea Ressi
Haley Rosenbaum
Micah Souder
Bradley Stewart
Kari Sutherlin
Shelby Troutman
Arin Wesner
Daman Wynn

Amzel and Knofel Fortner

Olivia Gregory

AWC Class of 2002

Lauren Donser

Kays Chapel Community Scholarship

Arin Wesner

Ralph & Faye Motsinger Mahuron

Jaclyn Branaman
Nyssa Boyd
Chris Doan
Sam Garrity
Jessica Hinkebein
Leslie Hoar
Alyssa Parker
Jamie Schocke
Angela Sells
Amie Shipman
Arin Wesner

Helen Gill Scholarship

Jennifer Hurst
Samantha Reynolds
Logan Walker

John C. Tackett Healthcare Provider Scholarship

Jordan Humphrey

John D. Fultz

Dana Jackson

Motsinger Family Scholarship

Kaitlin Logan
Amber Campbell

Albert and Manda Huff Scholarship

Sam Garrity

William C. and Martha Branaman Scholarship

Thomas Snider

John Elliott Scholarship

Clayton McGuire

Larry Stephenson Scholarship

Michael Baird

Morris and Marty Rosenbaum Scholarship

Sam Garrity

Little York Grade School Scholarship

Michael Baird
Tera Krieger

Dr. Ranessa Cooper Scholarship

Jamie Schocke

Mary Payne Scholarship

Evelyn Garriott
Clayton McGuire
Luke Spencer Pierce
Logan Walker

Billy Stonecipher Scholarship

Emma Naugle

Howard and Juanita Hinkle Scholarship

Cory Batt

Joseph and Joanna Gili Scholarship

Chantel Poe

Ralph and Mae Decker Scholarship

Brianne Miller

SHS Class of 1954 Scholarship

Olivia Newberry

Washington County Community Foundation Scholarship

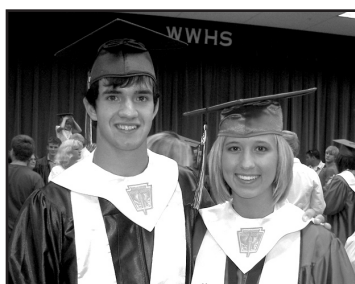
Brittany Bedwell

James Brown Scholarship

Cory Batt
Martin Chastain



Audrey Mounts



Martin Chastain and Katie Hawkins
look forward to college!



Melody Dalton and Erin Newcomb
enjoy their graduation day.



Ranessa Cooper

Sharing the Legacy

The following list of our funds explains the purpose of each fund. Many are named in honor of someone. Every named fund honors the legacy of an individual, couple or family. Each of these people honored gave something special to our county. For some it was leadership or business acumen; for others, a rich tradition of volunteerism. For still others, it was their youth and promise. In their names, lives are being changed for the better, needed community projects are being funded and some part of them remains with us forever.

Meet neighbors who created a legacy for Washington County:

Albert and Manda Huff Memorial Scholarship Fund

Albert and Manda (Hamblin) Huff were both born in 1904 into humble beginnings in the Cumberland Mountains of the Eastern Kentucky Appalachians. Each of them was only able to attend school up to the third grade. They married at age 16. The Huffs moved their family to a 60-acre farm just south of Salem in 1947. Albert worked for the railroad for 26 years and Manda managed the farm during the week and also worked at the canning factory in Austin.

Albert enjoyed carpentry, wood crafting and singing Appalachian Folk songs. Manda enjoyed gardening, making candy and playing the organ that Albert bought for her. Because of their background, both valued formal education and hard work very much. Through example, they instilled these values into their children. They were determined that their children attend college.

Their children thought it appropriate to honor their parents and their values by creating a scholarship fund to help young people in Washington County further their education.

Amzel and Knofel Fortner

Knofel began his career in education in 1937. Over the years, he taught bookkeeping, mathematics, and was a very successful basketball coach. He served as principal of Campbellsburg High School and as Superintendent of the West Washington School Corporation for 21 years, retiring in 1980. During his tenure as Superintendent, he supervised the reorganization of 10 elementary schools and two high schools into the current structure of one elementary school and one Jr/Sr High School.

Amzel received her bachelor's degree and master's degree in education from Indiana University. She taught school, mostly fifth grade, for 38 years, retiring in 1980. She was a member of the First Baptist Church, Indiana State Teacher's Association, Delta Kappa Gamma, Phi Beta Psi, and Eastern Star.

Amzel and Knofel dedicated their lives to educating our youth. They spent countless hours preparing our students for their future roles as citizens. Now, through the Amzel and Knofel Fortner Fund, they can continue this very important work, by providing graduating seniors from West Washington scholarships to pursue their college education. What an incredible way for educators to continue their mission in life!

Anne Terrell Delta Kappa Gamma Scholarship Fund

In celebration of her birthday, Anne's husband, Butch, established this fund in honor of Anne's many years serving as a teacher and middle school administrator. Since Anne is an active member of Delta Kappa Gamma, she wanted the college scholarship to be awarded in conjunction with this organization.

Audrey Mounts Scholarship Fund

Audrey Mounts grew up in the New Philadelphia area of Washington County. She was an only child who lost her father at an early age. She had to work part-time while attending Indiana University and sent money home to help her mother. She retired from the West Washington School Corporation where she taught English. She was an avid gardener, collector and historian. She volunteered at the Stevens Museum and was a member of the Historical Society. She loved to work

All Donors 2009

Anonymous
Accenture LLP
Ackeret Engineering
Bob and Teri Agan
Dan Agnew
Allegiant
Allen, Allen, and Brown
Tim and Rose Anderson
AQUA Indiana
James and Diana Apple
Todd and Beth Armstrong
David and Anita Arney
Mary Margaret Arnold
Awareness Washington County
Kevin and Linda Baird
Harry and Miriam Baker
Opal Baker
Sam and Judy Barnett
Pam and Mark Barry
Shirley Batt
William Batt
Nancy Baxter
Frederick and Barbara Baynes
David and Carolyn Beck
Max and Jeanne Bedwell
John and Kay Begley
Sara Rae Bellows
Barb Bennett
Larry Bennett
Robert and Elizabeth Bennett
Sue Bennett
Betterment Committee
of Campbellsburg
Joy Bierly
Randall and Susan Bills
Ron and Debbie Blandford
Blue River Coon Hunters Club
Blue River Services
David and Jamie Bower
Ben Bowling
Stephen and Lanita Boyd
Robert and Jane Brewer
Robert and Toby Brewer
Steven and Christine Brewer
Donald and Phyllis Brewster
Mary Bridgewater
Walter Bridgewater
Dan and Sue Brock
Adrian and Cristy Brown
Bronie and Sandy Brown
Jim and Dottie Brown
Lonnie and Judy Brown
Trevor and Tricia Brown
Lester Burns and Eula Nickell
Canton United Methodist Church
John and Diane Carl
Janet Carrington
Jerry and Mary Carter



Cavetown Cemetery Association
Leonard Chastain
Herman Childers
City of Salem
City of Salem Employees
Marvin and Sandy Clark
CLS Industries
Frank and Jo Cole
Dan and Wendy Colglazier
John and Rosemary Colglazier
Tim and Pam Colligan
Barbara Collins
Ramona Collins
Community First Bank
Ruth Cooke
Ranessa Cooper
Cottage at West Point
Cottongim Enterprises
Steve Crane
Curves
John Custer
DanMar Family Pharmacy
Harry and Mary Danz, Jr.
Deanna Davis
Heather Davis
Karen Davis
Lee Davis
Steve and Barbara Davis
Tony Davis
Dawalt Funeral Home
Becky Day
Dominic and Melanie Day
Eddie and Shelly Deaton
Sam and Malvina Deaton
Mae Decker
David and Sally DeJean
Edgar and Elinor DeJean
Chuck and Jackie Demlow
Democratic Executive Committee
Dale Denny
Lowell Depoy
Gary and Beth Ann Dismore
Don Hoar Farms
Dr. Jeffrey Morgan Employees
Mary Drabek
Lois Droutz and Ann King
Robert and Cheryl Drumm
Victor and Mary Dufour
Bill and Tanya Dustin
Sid and Kathy Dye
Julia Dyer
Edward Jones
Brent and Lauren Elliott
Mark Leach and Linda Elliott
Paul and Kathy Elliott
Von and Rita Elliott
Estate of Jean Berkey
Estate of Robert L. Morris
Jack Etzler

in her flower garden and she collected glassware, china, antiques, and she saved many cards and pictures that she received from former students. This fund was established to help students attend college. Audrey's dream was to help others attend college, so that they would not have to struggle the way that she did. She also hoped to teach others to give back to their community.

Awareness Washington County Fund

This fund, established by Burl and Carmelita Jean in 1994, will help to support the on-going operating costs of Awareness Washington County. Awareness Washington County, in existence since 1983, is a nationally recognized leadership training program dedicated to strengthening and transforming Washington County by developing servant leaders. Awareness Washington County offers classes on an annual basis to anyone interested in enhancing their leadership skills and working towards the betterment of Washington County.

Awareness Washington County Class of 2002 Fund

This fund is the class project for the AWC Class of 2002. Their goal is to make a lasting difference in our community. As a result, they decided to establish a scholarship fund with the Washington County Community Foundation, to provide scholarships to college-bound individuals who have demonstrated involvement in their community through community service.

Barbara (Welcher) Custer Memorial Fund

John Custer established this fund in honor of his wife Barbara Welcher Custer. The proceeds are to go to the Girl Scouts and to Salem High School Band.

Betty Motsinger Touch Tomorrow Fund

Betty established this fund so that she could continue her support of Washington County, forever.

Big Brothers Big Sisters

Big Brothers Big Sisters established this fund, with the assistance of a matching challenge grant, to support their important work, youth mentoring, for generations to come.

Billy Stonecipher Scholarship Fund

Billy was born in 1919 and grew up in Salem. He graduated from Salem High School and earned a Bachelor of Arts degree in mathematics and science from Butler University. He earned a Master of Science degree from Indiana University and also earned 66 hours of credit beyond the Master's level from Butler, Indiana and Purdue universities.

He was an army veteran, having served four years in WWII in both the European and Pacific theaters. He worked in the Indianapolis public school system for 22 years. In 1971, he became the superintendent for Salem Schools. He served in that position for four years, until his death.

Not many people come full circle in their lives, as Billy did. Rising to superintendent of the school system that provided him his education for the first twelve years is an unusual, outstanding accomplishment. Helping to build a new educational facility is a once in a lifetime event. Being honored with a scholarship fund, which will provide a Salem graduating senior with money for college every year, forever, is a legacy that will never die. Not bad for a "kid from Salem."

Blue River Friends Church & Cemetery Fund

Friends of the church have funded this endowment in order to maintain the current Quaker Church and its cemetery.

Blue River Services, Inc. Fund

This fund was established to further the mission of Blue River Services, Inc., which has many social service programs in Southern Indiana.



Bob Holler Scholarship Fund

This fund was started by Community First Bank to honor Bob Holler as he retired from their Board of Directors. The issued funds will provide scholarships for Salem High School and West Washington High School seniors that are of sound moral character and possess a strong record of community service.

Bob and Carol Strange Touch Tomorrow Fund

Bob established this fund in loving memory of Carol in 2009. This fund will award grants in their name for generations to come, thereby keeping their spirit of community service alive.

Brent and Lauren Elliott Touch Tomorrow Fund

Both Brent and Lauren believe in the future of Washington County and started this unrestricted fund in 2002 to support the future needs of the community.

Burl & Carmelita Jean Touch Tomorrow Fund

Burl and Carmelita established this fund in 2001. Both Burl and Carmelita have been actively involved in the Foundation. Carmelita is one of the Foundation's founding board members and Burl served on the Foundation's Board of Directors from 1993 to 2002. They wanted to establish a fund that would be flexible in meeting the needs of our community, both now and in the future, so they started this unrestricted fund which will issue grants for a variety of projects on an annual basis.

Canton United Methodist Church Fund

Brent and Lauren Elliott started this fund to provide support to the church as it carries out its role and mission. Generations of Brent's family attended church at Canton.

Carol Ruth Mosier Touch Tomorrow Fund

Carol Ruth was a dedicated school teacher for 34 ½ years. She was also devoted to her family and church. Carol Ruth served on the Foundation's Board of Directors from 2003 until her death in 2005. She served on several committees and was a strong advocate of the Foundation. Upon her death, her family and friend's started this fund in her memory, so that her dedication to our community could go on forever.

Cavetown Church & Cemetery Fund

This fund was created through the efforts of Don Green and Mary Nicholson of Campbellsburg to perpetuate the maintenance of the church and cemetery.

Charlotte Martin Memorial Fund

Charlotte Pruitt Martin was born in 1943 in Jeffersonville, Indiana. While Charlotte was a small child, the Pruitts moved to Borden, where Charlotte grew up and graduated from high school. Her musical talents led her to sing in local churches, on her own radio show, and even at the Grand Ole Opry at the age of 17. It was at the Opry that a young man borrowed and accidentally scratched her new guitar. Later, the young man became the legendary country music singer Conway Twitty. Charlotte treasured her involvement with her three children and teaching them her values. She also loved horses. She actively participated in her children's lives until she was no longer physically able, following her diagnosis of breast cancer in 1979. Although the doctors predicted she would live two years, she fought the disease for six years. Her family established this fund to honor her and her fight against cancer and to help other people who are fighting cancer. The specific purpose of the fund is to help provide transportation for medical appointments.

Clark-Grosvenor Parent Touch Tomorrow Fund

Bruce and Linda Grosvenor moved to Salem/Washington County in 1990. Bruce worked in local industry and Linda worked for the school corporation. Both have retired to the community and wanted to establish a fund in honor of their parents – Charles and Thelma Clark, and Bruce

Bill Evans
Todd and Jana Ewen
Extendicare
Byron Fagg
Stephanie Ferriell
Bill and Norma Fielding
Tom and Leah Fihe
The First Baptist Church
First Harrison Bank
Merwyn and Connie Fisher
Carol Fleenor
Perry and Dorothy Fleenor
Ralph and Doris Fordyce
William Fox and Sharon Elliott-Fox
Arthur Freed
Charley Ann Fuglebert
John Fultz
Mary Kay Fultz
Kenneth and Bobbette Gammon
Margaret Gasaway
Jeff and Linda Goen
Roger and Jean Ann Goen
David and Theresa Gottbrath
Keith and Marty Gran
Richard and Marcia Grassmyer
Dottie Gravatt
Gary and Sylvia Graves
Byron and Vicki Green
Mary Green
June Greene
Lois Greene
Opal Gresham
Gary and PaulaJo Gross
Bruce and Linda Grosvenor
Cheryl Gumaelius
Mindy Gunn
Brian Haag
Carolyn Haag
Frank Habermel
Don Hacker
Ron and Pam Haendiges
Robert Hall
Rick and Michelle Hamer
Cindy Harcourt
Jeanette Hart
Mary Hartley
Marvin and Sally Hattabaugh
John and Sue Hawkins
Debbi and Lynn Hayes
Todd and Lori Hazelip
Gene and Judy Hedrick
Jack and Donna Hedrick
Pat Heiny
William and Linda Hepler
The Waters
Nancy Hiestand
John and Lois Hildebrand
Jon and Lori Hill
Max and Phyllis Hinkle



Morris and Betty Hoar
Randall and Sharon Hobson
Julia Hodges
Bob and Evelyn Holler
Hoosier Uplands
Greg Hopkins
Dustin and Erin Houchin
Houghton Mifflin
Jarvis Hudson
Morris and Joanne Hudson
Walter and Cathy Huey
Charles and Mary Hunt
Indiana Association of United Ways
Indiana Bank and Trust
Indiana Grantmakers Alliance
Indiana University Southeast
Independent Order of
Odd Fellows Lodge #67
Connie Jackson
Jackson County REMC
Jackson County United Way
Jay C Food Store
Burl and Carmelita Jean
Jean's Extrusions
John Hay Center Foundation
John Jones GM City
John Jones GM City Employees
Jim and Judy Johnson
Steven and Paula Johnson
Kaden and Christy Karmire
Douglas and Susan Katt
David and Melissa Keiser
Mark and Mary Keller
Robert and Sandra Kelley
Dan and Val Kelly
F. Dan Kelly
Martin and Wanda Kennedy
Robert Knox
Tom and Libby Kruer
LaGene Jewelers
Robert and Kay Lambert
Leader Publishing Company
Roy Lee
Karen Libka
Lifespring of Washington County
Livonia Lions Club
Loy and Fordyce
Bruce and Marcella Mahuron
Jack and Carol Mahuron
Joe and Chris Mahuron
Jay and Patricia Marshall
Marah Marshall
Philip and Rebecca Marshall
Marshall Monuments
Marvin and Mignon Marshall
Imogene Martin
Virginia Martin
Ed and Betty Mason
Jim and Judy Matthews
Gerald and Charlene Mattingly
Donald and Nancy Matson
Steve and Christa McClure
Greg and Cynthia McCurdy
Earl McDill

and Juliette Grosvenor, Sr. This Touch Tomorrow Fund was established in 2007 to help support the many worthwhile projects the Washington County Community Foundation makes possible. Bruce has served on the Board of Directors of the Foundation since 2002.

Community Learning Center Fund

Beth Sluys, Victor and Mary Dufour, Jim and Judy Johnson, David and Carolyn Beck, Jack and Carol Mahuron, Tom and Kim Scifres and Bob and Carol Strange established this fund. The purpose is to provide grants for operational expenses of the Community Learning Center.

Crusade for Children Fund

This fund was established by John Jones in memory of Joe Huber. It will support the work of the Crusade for generations to come.

D. Jack Mahuron Education Fund

This fund was established by the Washington County Community Foundation Board of Directors in 2001 in honor of the first Executive Director of the Foundation, Jack Mahuron. Jack worked as the Executive Director of the Foundation from 1993-2001 on a volunteer basis. Upon his retirement as Executive Director, this fund was established in his honor. The purpose of the fund is to provide small grants to classroom teachers in all three county school corporations for innovative classroom projects.

D. Jack and Carol Baker Mahuron Fund

This fund is to continue their giving to the First Christian Church and to the Washington County Historical Society.

Daniel Main Fund for Youth in Arts

To honor Daniel Main and his years and talent of directing youth plays in Washington County, Kim Scifres started this fund to provide support to organizations in Washington County that provide opportunities for youth to participate in artistic endeavors. Many of Daniel's former actors and their parents also chose to honor Daniel by contributing to this fund.

David Beck Fund

David Beck, first president of the Washington County Community Foundation and founding board member, established this fund in 2001. Through his many years of dedicated service to the Foundation, David realized the importance of giving unrestricted money to the foundation, because this type of gift allows flexibility for the Board of Directors to meet the ever-changing needs of Washington County.

Dr. Eddie Apple Family Community Youth Development Fund

Dr. Eddie Apple's friends established this field of interest fund to support youth development in the community. Grants from this fund will be used to support youth development in Washington County.

Donivan Jack and Carol Baker Mahuron IUS Scholarship Fund

Jack and Carol established this fund to award a scholarship to a Washington County high school graduate attending Indiana University Southeast.

Edmund and Mary Drabek Scholarship Fund

Mary Drabek established the scholarship fund after the death of her beloved husband, Edmund. Edmund's adage to his family was always "I can't doesn't live here, but I can if I try does!" This adage followed Edmund from the poor farming family in Richmond, Texas to his first Army station in Fort Knox, Kentucky where he met Mary. The two married soon after they met and began raising a family. After a few years of saving, Edmund and Mary bought an 80-acre farm in Greenville, Indiana. After five years of farming in Greenville, Edmund decided it was time to take



on a bigger farm. They found the perfect 300-acre farm in Washington County and still continued with their outside jobs. Edmund and Mary always encouraged their children to excel at school and at least one of them attended the school events. The kids were never allowed to give up without trying. Edmund and Mary's teachings of their own children, love of Washington County, and the wish to see more Washington County youth succeed is the basis of the Edmund and Mary Drabek Scholarship Fund for Washington County youth who are pursuing their education in mathematics and science. Hopefully with some help: I CAN IF I TRY will be a motto for more youth of Washington County.

Exchange Club of Salem Fund

David and Carolyn Beck originally funded this account. The Exchange Club is continuing to contribute to this fund. The income will be used in the future to fund the Exchange Club's scholarship program.

First Baptist Church - Salem Fund

The First Baptist Church Fund was established by Robert and Mary Margaret Arnold. David and Anita Arney have also contributed to this fund. This account was initiated as a permanent fund that others can add to and the proceeds are to be used as the church deems appropriate.

First Christian Church - Salem Fund

This fund was established by the First Christian Church trustees and Donald L. and Virginia Martin to be used as the church board deems appropriate. Robert and Clarice Morris also added to this fund.

First Harrison Bank Touch Tomorrow Fund

In a spirit of community, the First Harrison Bank established this unrestricted fund, in order to contribute to our county now and forever.

1st Youth First Youth Development Fund

The Advisory Council of Youth First has established many goals, one of which is sustainability for the organization. To that end, they decided to establish this fund, hopefully the first of many, and lay the groundwork for others to follow.

Friends of Beck's Mill

Larry Nelson established the fund after a literal "luck of the draw." Nelson won \$1,000.00 at the WCCF annual meeting and decided the money would be best served by establishing a fund to provide support to the Friends of Beck's Mill.

Garland A. & Norma Sue White Touch Tomorrow Fund

Garland and Norma Sue's initial gift to this fund was made in memory of their parents, Russell H. White, Sr., Mildred (Trinkel) White, Harold E. Peters and Esther (Zahnd) Peters. The establishment of this fund is a natural extension of their civic-minded generosity.

Gene & Judy Hedrick Touch Tomorrow Fund

Desiring to improve the quality of life in Washington County, Gene and Judy Hedrick established this fund in 2003. Through this fund, they will be able to give back to Washington County for time without end.

Glenn Armstrong Touch Tomorrow Fund

Glenn was born on March 14, 1912 to Stephen and Ada (Sherwood) Armstrong. His mother succumbed to Tuberculosis when Glenn was six months old. Shortly after her death, Glenn's grandmother, Amanda Sherwood, assumed responsibility for his care and raised him. At age 33, Glenn went into the family business, Armstrong Hardware, which was opened by Steve Armstrong, Glenn's father, in 1914. In 1989, after 75 years of family ownership, Glenn and his wife,

Jane McKinley
 Evelyn McPherson
 John and Mary Mead
 Mead, Mead, and Clark
 EF Meyers
 Mid-Southern Savings Bank
 David and Susan Miller
 Jeff and Luellen Miller
 Brent and Heather Minton
 Clara Marie Moon
 Jeff and Karen Morgan
 David Morris
 Mt. Tabor Christian Church
 Marjorie Mull
 Dan and Laura Mullins
 Edna Mullins
 Helen Myers
 Jerry and Judy Myers
 Marta Myszak
 Shirley Nale
 Hiram and Eileen Nally
 Mark and Roxanne Nantz
 Mick and Gail Napier
 Larry and Jeanette Nelson
 Netshape Technologies
 Danny Newby
 Frank and Denise Newkirk
 Jim and Judy Nice
 Carl Nicholson
 Jonathan and Kristi Noel
 Tony and Jeanette Nolan
 Kevin and Anne O'Connell
 Laura O'Donnell
 Older American Services Corporation
 Ronald Ooley
 Ray and Martha Oppel
 Dan and Kristine Owsley
 Max and Kathy Packwood
 Estel Parks
 Meredith and Beverly Peters
 PNC Bank
 Stephen and Stephanie Porter
 Harry Purkhiser
 Luella Purkhiser
 Fox and Kristy Purlee
 Larry and Bonita Purlee
 Donald and Karen Qualkinbush
 Jim and Linda Ralston
 Verne and Diane Ratliff
 Susan Record
 Regions Bank
 Bill Reister and Marjorie Morris
 George and Margaret Rice
 Keith and Nancy Rice
 George and Jan Richardson
 Jamie and Melissa Richardson
 Marvin and Melanie Riddle
 Mary Helen Rippy
 James and Patricia Ritz
 John Roberts
 Andrew and Jill Roll
 Brent and Diane Rosenbaum
 Jerry and Gloria Rosenbaum
 Morris and Marty Rosenbaum



Paul and June Rudder
Steve and Stephanie Sabens
Salem Apothecary
Salem Community
Schools Employees
Salem Exchange Company
Salem Fire Company
Salem Lions Club
Salem Middle School
Salem Mortgage
Salem Presbyterian Church
Salem Public Library
Salem Rotary Club
Salem Title Corporation
Salem True Value
Salem-Washington Twp.
Senior Citizens Center
Jimmy Sands
Jim and Judy Saunders
Paul Scifres
Tom and Kim Scifres
Curtis and Karen Scott
Sara Shields
Jerry and Coyla Short
Myron and Terri Shouse
Larry and Patricia Shrum
Nicolas and Emily Siler
Waneta Simpson
Lynn and Brett Smedley
Sharon Smedley
Shirley Smego
Cecil and Martha Smith
Joseph and Elizabeth Smith
Dawson Souder
Norman and Dixie Souder
Jeff and Kim Souder
Paula Jo Sparkman
John Sparks
Jonathan and Monika Spaulding
Donna Spurgeon
Mark and Jana Lee Spurlin
Mary Etta Stearns
Jim and Michelle Steggeman
Garnelle Stephenson
Melvin and Gertrude Stephenson
Maxine Stewart
Jim and Carolyn Stiles
Marvin Stout
Bob Strange
Frank and Pat Sullivan
Steve and Barbara Summers
Lowell and Donna Swartz
Bev Sweeney
John and Ginny Tackett
William and Joy Taylor
Tele-Media Solutions Employees
Temple and Temple
Andy and Sandra Terrell
Norman and Anne Terrell
Trent Thompson
Thomas and Starr Tollefson
John Tonnis
Bonnie Trinkle
William and Sherri Troutman

Bernice, sold the hardware store. "I hadn't planned seriously to retire although at my age I thought it was time for retirement" stated a 77 year-old Glenn. "It's been a very pleasant experience. If it hadn't been for the customers, we wouldn't have lasted that long."

This unrestricted fund will support numerous worthwhile community projects. Glenn's wish to give back to the community will come true, year after year, forever.

Goldie Taylor Nally Memorial Fund

Goldie Taylor Nally was born in Higginson, Arkansas on January 21, 1906 to John and Minnie Lee Taylor. Her father was Justice of the Peace and a constable and her mother was a homemaker. Goldie was able to attend school until the eighth grade, where she developed a love for reading. She married Henry Hiram Nally when she was sixteen years old. Together, they had three children: James, who died in infancy, Mildred and Hiram.

Goldie's husband died in 1942 from kidney disease. After his death, she worked at a local cafeteria as a cashier to support the family.

Goldie lived to be 92. At the time of her death she had three grandchildren and four great-grandchildren. She never wavered in her love of children. In 1998 her family established the Goldie Taylor Nally fund. This is a designated fund that grants to the "Shop with a Cop" Program. "I thought it would be appropriate to set up this fund in Mom's memory," stated her son. "Now at least one child will be clothed and taken care of each Christmas in her memory. I think she would have been very pleased."

Helen Gill Scholarship Fund

Helen was born at home on April 10, 1911 to Dora and Winfield McCoskey. When Helen started school, her method of transportation was simple: she walked. Depending upon the time in her life, this could be as little as 1/2 mile or could entail walking "through fields on the neighbor's farm, cross a creek by means of a foot log, and climb the hill to the school." However, these trips evolved into a lifelong love of education. Helen started high school in the autumn of 1924. The previous spring, she had attended the high school play and operetta and fell in love with "the handsome young man who had the leading role in the programs." She told one of her friends that she was going to marry that boy. His name was John Parnell "Bob" Gill. Eventually, Bob and Helen were married on February 15, 1939. "Everything worked out fine and we were happy." Bob and Helen had two daughters, Cheryl Lynn and Jean Elaine. Helen taught school for many, many years. She also traveled internationally for Sweet Adeline Competitions. Helen could play the piano, clarinet, guitar and accordion. She played the organ for many years at St. Patrick Church. This scholarship fund, established in Helen's memory, will provide scholarships to graduating seniors from Salem and East Washington High Schools.

Henderson Park Fund

This fund was established by the Salem Common City Council with proceeds from the purchase of permanent rights to Henderson Park by the Nature Conservancy. The income will be used each year by the Salem Water Department for their operation and equipment purchases.

Helsel Family Salem Presbyterian Church Fund

Barbara and Jess Helsel started this fund in 2007. The purpose of this fund is to provide support to the Salem Presbyterian Church for capital improvement projects.

Hicksite Church & Cemetery Fund

Quaker Friends have funded this endowment in order to maintain the Old Quaker Church and its cemetery. This church is one of the oldest churches in the State of Indiana.



Holler/Myers Fund

Bob and Evelyn Holler established this fund to provide financial support for maintenance expenses for Lawrenceport Cemetery Association, Saltillo Cemetery and the Blue River Friends Cemetery.

Hoosier Uplands Fund

This is an agency endowment fund established by the Board of Directors of Hoosier Uplands. Earnings from this fund will be granted to Hoosier Uplands to provide support to Hospice, Headstart and Hoosier Uplands Housing Services.

Howard and Juanita (Myers) Hinkle Scholarship Fund

Max and Phyllis Hinkle established this fund in honor of Max's father and stepmother. The purpose of the fund is to provide vocational scholarships to Washington County high school students. This scholarship is to be rotated between the three county high schools.

A life-long resident of Washington County, Howard was born on February 9, 1914 to Earl and Emma Hinkle. He graduated in 1933 from Salem High School. After graduation, Howard started to work as a mechanic for Simpson Brothers Construction Company. "I started to work on automobiles when I was twelve years old," Howard once stated. "It was all I ever knew." By 1946, Howard was the owner of an Oldsmobile dealership, Salem Motors Company. He retired at age 68, after 48 years in the car business. "We sold quite a few automobiles in my lifetime. We could repair anything from the front bumper to the back; from the top to the bottom. I always said, 'If human hands made it, then human hands can fix it.'"

Juanita (Myers) Hinkle was in the same Salem High School graduating class with Howard. She was born in Washington County on January 3, 1914 to Orlando and Maude Myers. Juanita went to college to study education. She received her teacher training at Central Normal, Ball State University and Indiana University. She taught for many years, finally retiring in 1975 from Bradie Shrum Elementary School.

During her tenure at Salem, Juanita spent two and one-half years teaching Special Reading and during her final year of employment, she was Supervisor of the Tutorial Program and Teacher's Aid Program.

Independent Order of Odd Fellows Lodge #67 Fund

As it became apparent to local members of the IOOF #67 that their numbers were dwindling and their ability to remain a viable organization was becoming nearly impossible, the members decided that they wanted the local assets, which they had accrued over the past several decades, to stay in Washington County. So, after much time and effort, the local Lodge received permission to keep the funds locally, by contributing them to the Washington County Community Foundation. The lodge established a fund in the Foundation to benefit the John Hay Center Foundation. This way, the IOOF Lodge #67 can continue their work of supporting our community long after the members are gone.

James & Diana Apple Touch Tomorrow Fund

Diana has served on the Foundation's Board of Directors from 2000 through 2008. She was the President of the 2004 Board of Directors. James and Diana have a history of community service and wanted their community-minded spirit to live on, so they established this unrestricted fund with the Washington County Community Foundation in 2002.

James L. Brown Scholarship Fund

The West Washington Agriculture Department established this scholarship fund in honor of Jim Brown, who taught Ag for 30 years and was also the FFA sponsor. The purpose of the fund is to provide scholarships to students from West Washington who are 4 year FFA members, have a GPA of 3.0 or higher, and indicate a strong desire to major in an Ag related field of study in college.

Ronald and Rachel Trueblood
Bobbie and Polly Turpen
Eric and Rina Turpen
Kenneth Turpen
Rita Turpen
Steven and Lynn Turpen
United Way of Scott County
Marie Vess
Shirley Voyles
Wron and Nona Wade
Jon-David and Lindsey Wade-Swift
Joe and Barbara Walker
Mike and Kim Wallace
Danny and Carol Walton
Don and Ruby Warnes
Washington County Economic
Growth Partnership
Washington County Food Bank
Washington County Prosecutor
WCCF Employees
Ben and Myra Weathers
David and Paula Weaver
Sharolyn Wernert
Gene and Anita Wesley
Timothy and Teena Wesley
Chris and Donna Wesner
West Washington FFA
Sue Wheeler
Suzanne White
Keith and Jerita Williams
Olga Williams
Paul Williams
John and Shirley Woehle
Women's Club
Wonder Valley Church Camp
Robert and Sandra Woodward
Ric and Deb Wrye
YMCA of Washington County

2009 Corporate Sponsors

Blue River Services
CLS
Community First Bank
The Cottage at West Point
Curves
DanMar
Edward Jones – David Morris
Dawalt Funeral Home
Diana Armstrong –
State Farm Insurance
Dr. Gene Hedrick
First Harrison Bank
Hoosier Uplands
Indiana Bank and Trust
Jeans Extrusions
John Jones GM City
Leader Publishing Company
Loy and Fordyce
Meadowview
Mid-Southern Savings Bank
NetShape
PNC

Regions Bank
Raymond James – Ron Haendiges
Salem Apothecary
Salem Mortgage
Salem True Value
Steven Brewer, CPA
Dr. John Tackett
The Waters of Salem

Memorials

In memory of Darrell Reasor

Bill Reister and Marjorie Morris
Todd and Beth Armstrong
Adrian and Cristy Brown
Ray and Martha Oppel
Jon-David and Lindsey Wade-Swift
Burl and Carmelita Jean
Jeff and Karen Morgan

In memory of Larry Turpen

Rita Turpen
Accenture LLP
Ackeret Engineering
Dan Agnew
Opal Baker
Max and Jeanne Bedwell
Larry Bennett
Stephen and Lanita Boyd
Dan and Sue Brock
Lonnie Brown
Trevor and Tricia Brown
Leonard Chastain
Tim and Pam Colligan
Harry and Mary Danz
Tony Davis
Lois Droutz
Ann King
Bill and Norma Fielding
Jeff and Linda Goen
Roger and Jean Ann Goen
Richard and Marcia Grassmyer
William and Linda Hepler
Charles and Mary Hunt
David and Melissa Keiser
Helen Myers
Jerry and Judy Myers
Ray and Martha Oppel
Kathy Packwood
Larry and Bonita Purlee
Verne and Diane Ratliff
Bill Reister and Marjorie Morris
Morris and Marty Rosenbaum
Salem Exchange Club
Norman and Dixie Souder
John Sparks
Marvin Stout
Bobbie and Polly Turpen
Eric and Rina Turpen
Kenneth Turpen
Steven and Lynn Turpen
Marie Vass

Jim & Judy Johnson Touch Tomorrow Fund

Judy is the first employee of the Foundation and the second Executive Director. She began her employment with the Foundation in 2001.

Desiring to make Washington County a better place for those who follow, Jim and Judy established an unrestricted fund. Therefore, their gift will support future projects that will serve to improve the quality of life in Washington County.

Jinny Scifres Scholarship Fund

Paul and Tom Scifres, Dr. Ed Apple and Jinny's many friends established this fund. This fund will provide scholarships to individuals pursuing post secondary education in the field of nursing. Jinny was born on August 17, 1942 in Salem to Tom and Louise (Evans) Tiedt. After starting a family, Jinny made the tough decision to return to school and study nursing. After graduation, Jinny began her nursing career at Washington County Memorial Hospital as an Emergency Room Nurse. Jinny's love of nursing eventually lead her to several promotions and back to school once again. She eventually became the Director of Patient Care Services.

Jinny died in the fall of 2000, after bravely battling bone cancer. Her family and many friends established this scholarship fund in her memory, to assist others who, like Jinny, return to school to study nursing after starting a family or career. Jinny once stated, "My vocation in nursing has been rewarding. I appreciate the opportunity to help others in many ways. With God's help, I can make a difference and that is what I try to do."

John M. Colglazier Touch Tomorrow Fund

In 2009, the former employees of the State Bank of Salem held a reunion. At this reunion, they decided to collect money to honor former bank President, John Colglazier. "He had such compassion for each person he dealt with, whether it was a customer or an employee of the bank," remembered Jeanette Nolan. "I think it would be safe to say that we all learned a lot of valuable lessons from John during our different tenures at the bank."

John and Ginger Morris Touch Tomorrow Fund

John and Ginger have been active in our community for many years. Ginger was a founding board member for the Washington County Community Foundation and retired from the board in 2002, after 10 years of service. They wanted to continue the good work of the Foundation and support the many worthwhile projects yet to come, so they established this unrestricted fund with the Foundation in 2002.

John W. Mead and Mary B Mead Fund

John has been a member of the Board of Directors since 2002. He and Mary are active in the community and their church. They have established this endowed fund to improve the quality of life in Washington County for generations to come.

John & Paula Jones Touch Tomorrow Fund

John is a successful businessman and is active in the community. Paula is also very active in the community and her church. They both are interested in making Washington County a better place for future generations. Like many donors to the foundation, John and Paula wanted their gift to benefit as many individuals as possible. After careful consideration, they decided to make their gift unrestricted. By doing so, their fund will be flexible to meet the ever changing needs of Washington County, forever.

John E. Elliott Scholarship Fund

John Elliott was an industrial arts teacher at Salem High School, a farmer, a business partner, an auctioneer and a mentor to many. He influenced the lives of numerous students during his 28 years of teaching and his sponsorship of exchange students from various places around the world through the Rotary Club. John was born in Washington County in 1936. He attended Can-



ton Grade School and graduated from Salem High School. He married Sharon Cauble in 1956. Because of his value of education, he strongly influenced his own four children to complete college degrees. He enjoyed such hobbies as drafting, metalworking, carpentry, and woodworking. In 1972, with the help of family members, he designed and built a house that straddles a creek. He lived there until his death. By starting a scholarship fund in 1999 honoring his father, Brent Elliott felt he was also honoring his father's beliefs and values. Other members of the family have also contributed to this scholarship fund to honor John E. Elliott.

John D. Fultz Family Scholarship Fund

This scholarship fund, established by John D. Fultz in 2005, will provide scholarships to Washington County graduating seniors. John has been a member of the Board of Directors since 2002.

John Hay Center Foundation Funds

The John Hay Center Foundation Fund is to help maintain the John Hay Center owned by the Washington County Historical Society.

John C. Tackett Healthcare Provider Scholarship Fund

Originally from Lexington, Kentucky, John moved his medical practice to Salem in 1994. A member of the Exchange Club and the Alternative Mission Team, John is keenly interested in helping others. He established this scholarship fund to help the youth of Washington County pursue higher education in the medical field and to provide a resource to help dreams come true.

Joseph and Joanna Gili Scholarship Fund

This fund was established by Joseph and Joanna Gili's children in honor of their mother and in loving memory of their father. This fund will offer scholarships to graduating seniors from Salem and West Washington who intend to pursue a career in education. Joseph was born on September 20, 1914 in Clinton, Indiana after his parents had recently emigrated from Northern Italy. Joanna was born on March 28, 1920 in Bowling Green, Kentucky, where her family had lived for generations. Joseph and Joanna met at Western Kentucky University. Joanna completed college in three years so that she could graduate with Joseph in 1939. Joseph and Joanna had five children: Joseph Anton, Victoria, James Bradford (Brad), Susannah, and Sarah.

Joseph died unexpectedly at the age of 54. Both Joseph and Joanna dedicated their lives to their children and to education. In 1962, Joseph became the first principal of the newly consolidated West Washington High School and Joanna taught English. Through their actions, Joseph and Joanna taught their children the valuable lesson of giving to others. In 2002, their children used those many lessons taught and established this fund in honor of their parents, thereby creating a permanent legacy to Joseph and Joanna.

Josh Kearschner Memorial Fund

It was in the little things that Josh will be remembered. His smile. His hugs. The way he loved to play the piano. His love for his church and his religious convictions. The time he drove an hour to deliver a birthday card and chocolate chip cookies. Josh did simple acts of kindness all the time. He was also a gifted musician. He composed and recorded several original instrumental songs, which were made into a tape and CD. Anyone who listens to his music can feel his depth and tenderness and can imagine a heart full of love for others. After his death, Josh's many, many friends worked together to establish a fund in Josh's memory. This fund will benefit missionaries from Josh's church, the Church of the Latter Day Saints.

JP "Bob" Gill Fund for the Poor and Needy

JP "Bob" Gill was born on August 31, 1906 to Edith (Carnes) and James Gill. Although born on a farm, Bob's family moved to town when he was a child, so he knew little of the farm life. Bob's nickname came from his sister, who stated that when he was little he looked like a "Bob" in the

Joe and Barbara Walker
Ben Weathers
Paul Williams
Ranessa Cooper
Mary Kay Fultz
Bill and Tanya Dustin

In memory of Pete Brown

Burl and Carmelita Jean
Todd and Beth Armstrong
Jim and Judy Johnson
Frank and Denise Newkirk
Jon-David and Lindsey Wade-Swift

In memory of Ray Brewster

Jack and Carol Mahuron
Ron and Debbie Blandford
Donna and Phyllis Brewster
Lester Burns and Eula Nickell
John and Sue Hawkins
John and Lois Hildebrand
Jon and Lori Hill
Dustin and Erin Houchin
Dan and Val Kelly
Bruce and Marcella Mahuron
Joe and Chris Mahuron
Edna Mullins
Jerry and Coyla Short
Thomas and Starr Tollefson
Don and Ruby Warnes
Marvin and Sandy Clark

In memory of Betty Davis Gholson

Bill and Tanya Dustin

In memory of Bethel Batt

Bill and Tanya Dustin
Jeff and Karen Morgan
Mary Kay Fultz
Charles and Mary Hunt

In memory of

Jeanne Goodson Crigler

Bill and Tanya Dustin
Charles and Mary Hunt
Wron and Nona Wade
Jeff and Karen Morgan

In memory of Wayne Briscoe

Jim and Linda Ralston
Ranessa Cooper
Richard and Marcia Grassmyer
Charles and Mary Hunt
Jim and Judy Johnson
Cecil and Martha Smith
Tom and Libby Kruer

In memory of Alice Cook

Jeff and Karen Morgan

In memory of

Amzel and Knofel Fortner

Donald and Karen Qualkinbush

In memory of

Angela Narvell Hixson

David and Anita Arney

In memory of Audrey Stanley

Jeff and Karen Morgan

In memory of Bette Kelly

Mary Margaret Arnold
Democratic Executive Committee
Walter and Cathy Huey
Jim and Judy Johnson
Loy and Fordyce
Bob and Evelyn Holler

In memory of Bob and Ruth Roach

Marvin and Sally Hattabaugh

In memory of Bob Johnson

The Olga Williams Family
John and Kay Begley

In memory of Bob Stewart

Jerry and Judy Myers

In memory of Bonnie Crane

Gary and Paula Jo Gross
Gary and Sylvia Graves

In memory of Joe Stanton

Gary and Sylvia Graves

In memory of Vaughn Spaulding

Gary and Sylvia Graves
Leonard Chastain
Charles and Mary Hunt
Jack and Donna Hedrick
Mary Kay Fultz
Bob and Evelyn Holler
Jeff and Karen Morgan

In memory of Charles Kramer

Gary and Sylvia Graves
Charles and Mary Hunt
SEA

In memory of Carolyn Arnold

Mary Margaret Arnold
Morris and Joanne Hudson

In memory of Chris Bastin

Canton United Methodist Church

In memory of Harriett Stockover

Jon-David and Lindsey Wade-Swift
Jeff and Karen Morgan
Frank and Jo Cole
Salem Middle School
Charles and Mary Hunt

In memory of Dick McDowell

Jim and Judy Johnson
Rick and Michelle Hamer
Jack and Carol Mahuron

water. The nickname stayed with him his entire life.

Bob's first teaching assignment was at a one-room school in Old Pekin. Among other innovative ideas, he developed a football team and a school lunch program, allowing the eighth grade girls to cook soup for the other students. From there, Bob moved on to Mitchell High School, where he taught bookkeeping and then returned to New Albany Commercial College. He taught there part time, coached the basketball team and worked part time in a law office. He was admitted to the bar on June 6, 1928. He then moved to Chicago. There he worked for Marshall-Field and Company, which was one of the nation's largest department stores. Bob married Helen McCoskey on February 15, 1939. Bob was also an inventor and enjoyed experimenting with innovative ideas. He was one of the first hog farmers to use electric heat lamps at farrowing time and then studied whether this was economically feasible. He also designed special feeders and feed mixes and was featured in several national farm magazines. He was an accountant, lawyer, and a farmer. He could use surveying equipment, he could fix anything and he was an avid ham radio operator. At the time of his death, Bob made provisions for his favorite charities. Because of this, the Washington County Community Foundation now holds the following funds: The Washington County Food Bank Fund, The JP "Bob" Gill Fund for the Poor and Needy, (to provide support to a local chapter or council of the St. Vincent DePaul Society, and to St. John's Center, Inc.) and the St. Patrick Church Cemetery Fund.

Kays Chapel Community Church Scholarship Fund

Upon the closure of this church, the trustees took the proceeds from the sale of the property and created this scholarship fund for West Washington graduating seniors.

Kenneth "Colie" Coliapolis Memorial, Urban Beautification Fund

Colie's many friends and neighbors instituted this memorial fund for him. He was very much interested in beautiful lawns and flowers; therefore, the proceeds are to be used by the Urban Beautification Committee of Salem.

Kenneth W. Collins Scholarship Fund

Kenneth William Collins was a friend and teacher to all students who walked the halls of Eastern High School. Ken was born in Fressingfield, England on May 1, 1945. He was the only child of Brenda Elizabeth and William Collins. Ken graduated from Manual High School in 1963. He graduated from Purdue University in 1968 and accepted his first teaching position at Pendleton Heights High School in Pendleton, Indiana.

Ken spent his life educating our youth. He spent countless hours preparing our students to be better citizens and to have a good work ethic. And now through the Kenneth W. Collins Scholarship Fund he can continue this important work.

Kevin Johnson Touch Tomorrow Fund

Kevin Johnson named the Washington County Community Foundation as beneficiary of his life insurance policy. This gift will be used for generations to come for the betterment of Washington County.

LJ Fultz/Russell Trueblood Touch Tomorrow Fund

This fund is named in honor of two men who served as President of the Board of Directors of the Lee John Fultz School, a school for special needs children located on Harrison Street. Originally called the Hopewell School, this institution provided educational services for up to 25-30 special needs children every school year. It operated from 1954-1991. Both of these men were instrumental in building a savings account to support the operation of the school. After the school closed, the fund lay dormant for 10 years, upon which time, the trustees decided to place the money with the Washington County Community Foundation in honor of LJ Fultz and Russell Trueblood. This is an unrestricted fund that will be flexible to meet the varying needs of Washington County.



Larry Medlock Red Oak Fund

Larry Medlock, Board member from 1993-2002, established this fund to provide educational support and life enrichment to individuals with Type 1 Diabetes.

Larry Stephenson Scholarship Fund

Larry taught biology at Salem High School for four years. Teaching was a second career for him. Perhaps that is why he enjoyed it so much. He often said, "It's great to be at Salem High School. I am so glad that I didn't have to go to work today. I get to go to school!" Larry's enthusiasm spilled over into the classroom. He didn't measure his success in his work. He measured his success in the improvement he saw in each individual child, whether that was in the classroom or on the basketball court, where Larry loved to coach. He frequently received notes from his students with positive comments about his teaching style or a project in the lab. Those notes thrilled Larry. He often shared them with his co-workers, sometime close to tears when a student had particularly kind words for him.

Shortly before his death, Larry indicated that he would appreciate memorial gifts to establish a scholarship fund in his memory, and that is exactly what many of his friends, former students and family did. Although Larry's presence will be deeply missed in the classrooms at Salem High School, his memory and love of teaching and working with youth will live on forever, through the Larry Stephenson Scholarship.

Larry and Rita Turpen Scholarship Fund

The Larry and Rita Turpen Scholarship fund was established by Rita and her family in 2008. In honor of Larry and Rita's devotion to academics and athletics, this fund represents their continued contribution and impact on our county's youth. Designated for a Salem High School graduate, this scholarship is to be presented to a student athlete pursuing a degree in education.

The Legacy Council Touch Tomorrow Fund

David Beck established this fund upon his retirement from the Board of Directors of the Foundation in 2002. The Legacy Council is a group of individuals who have served on the Board of Directors and wish to remain active with the Foundation in a volunteer capacity.

Members of the Legacy Council are encouraged to add to this fund on an annual basis. Charter members include: David Beck, MarjiAnn Souder, Bob Strange, Jean Wilson, Ginger Morris, David and Elaine Branaman and Gene Hedrick.

Lelah Payne Fund

Lelah Payne established this fund for the purpose of assisting senior citizens. Although part of it is designated, the balance (55%) can be used at the discretion of the Board of Directors.

Little York Grade School Scholarship Fund

The alumni of Little York Grade School established this fund for the purpose of giving scholarships each year to a Salem High School graduate from the Little York area.

Lois Price Scholarship Fund

On September 15, 1918, Clinton Wesner and Carrie Thompson Wesner welcomed their youngest of five children, Lois, into the world. Lois attended grade school in Jefferson Township, Prowsville grade school and also Four Corners School. She graduated from Salem High School and was the first in her family to graduate high school. She later moved to Indianapolis where she met her husband Fred Price. They were married September 1, 1945.

Lois passed away in March 2007. This fund was created out of her estate to provide scholarships to graduating Salem High School seniors.

Marjorie Ann Martin Souder Fund

MarjiAnn was born on October 5, 1934 in Pekin to William O. and Elizabeth Hartung-Hoyt Martin. She was born to a family of educators and gladly accepted the calling to teach after graduat-

Meredith and Beverly Peters
Waneta Simpson
Larry and Pat Shrum

In memory of Don Collins

Bob and Evelyn Holler
David and Paula Weaver

In memory of Don Green

Leonard Chastain

In memory of Doris Purlee

Harry and Miriam Baker
Pam Barry
Sara Rae Bellows
Ben Bowling
Kenneth and Bobbette Gammon
Gene and Judy Hedrick
Morris and Joanne Hudson
Steven and Paula Johnson
Dan and Val Kelly
Jim and Judy Matthews
EF Meyers
Dan and Laura Mullins
Frank and Denise Newkirk
Ray and Martha Oppel
Pat and Larry Shrum
Jon-David and Lindsey Wade-Swift
Danny and Carol Walton
Suzanne White
Chuck and Jackie Demlow
Bruce and Linda Grosvenor
Dan and Karen Davis
Jeff and Karen Morgan

In memory of Dorothy Bush

Donald and Nancy Mattson
Tom and Libby Kruer

In memory of Dorothy Korff

Jack and Carol Mahuron

In memory of Gene Greene

Tom and Libby Kruer
June Greene

In memory of Barbara Jean Pepmeier

Burl and Carmelita Jean

In memory of Nellie Bills

Jeff and Karen Morgan

In memory of Dr. Eddie Apple

Jeff and Karen Morgan

In memory of Helen Myers

Jeff and Karen Morgan
Don Hoar Farms
Charley Ann Fugleberg
Bonnie Trinkle
Bob and Evelyn Holler
Bob and Robin Myers

In memory of Elmo Houston

Cecil and Martha Smith

In memory of Elva Fletcher

Dominic and Melanie Day
Marvin and Sandy Clark

In memory of Elva Norris

Leonard Chastain
Charles and Mary Hunt

In memory of Imogene Hazelbaker

Leonard Chastain
Carol Fleenor
Jim and Judy Johnson

In memory of Emma Jean Deaton

Mary Margaret Arnold
Ray and Martha Oppel

In memory of Ernie Zink

Adrian and Cristy Brown

In memory of Eugene Katt

Loy and Fordyce
Ralph and Doris Fordyce
Chris and Julie Fordyce
Todd and Jana Ewen

In memory of Frank Myszak

Salem Middle School
Charles and Mary Hunt

In memory of Gene Hedrick

Jerry and Judy Myers

In memory of Grant Comer

Perry and Dorothy Fleenor

In memory of Harry Lee Wilson

Perry and Dorothy Fleenor

In memory of Herschel Hardwick

Cecil and Martha Smith

In memory of James I Denny, Jr.

Dale Denny

In memory of Norma Jean Austin

Jeff and Karen Morgan

In memory of Larry Easton

Jeff and Karen Morgan

In memory of Jess Roberts

Robert and Sandy Woodward

In memory of Jim Livesay

Perry and Dorothy Fleenor

In memory of JoAnn House

Doug and Susan Katt

ing high school.

MarjiAnn was a history buff from the start. She received the DAR Good Citizen's Award in high school (an award she would later bestow on many other students in the county.) At the time, she had no idea what the award was about, but after researching the organization, she quickly learned that the DAR was closely aligned with several of her core values. She became very active in the DAR. She served as state regent from 1994-1997 and NSDAR Vice President General from 1997-2000.

This fund will honor the outstanding history student at Eastern High School. Through this fund, MarjiAnn's love of history will live on through the students that receive the award, and so will a little bit of MarjiAnn.

Marvin and Sandy Clark Touch Tomorrow Fund

Marvin and Sandy Clark established this fund in 2002, in support of the Foundation and the many grants that are distributed on an annual basis. In the spirit of giving back to the community, Marvin and Sandy's fund will issue grants to worthwhile community projects, as determined by the current Board of Directors. Since this is an endowed fund, it will continue to give, forever.

Mary Hilton Youth Development Fund

Because Mary Hilton was a beloved teacher, mentor, and friend to all students whose lives she touched just by being herself, the Pekin High School Class of 1958 has established a Youth Development Fund in Mary's honor. This fund will be Mary's legacy and continue her mission in life.... Helping young people to realize their potential.

Mary H. Payne - Salem Community Schools Fund

This fund was established by bequest to present scholarships to Salem High School students.

Mary Frances Nicholson Fund

Mary Frances Nicholson was a life-long resident of Washington County and was involved in many different organizations. One of those organizations was Blue River Services, of which Mary was on the Board of Directors. To honor Mary and her love of Washington County and helping others, Blue River Services established this fund in her name.

Maurice E Berkey Jr & Jean C Berkey Memorial Scholarship Fund/First Christian Church

From 1942-1945, Mauri (as his friends called him) served in the Army. He served under General George Patton and received Commendations signed by General Patton and well as General Omar Bradley. Mauri worked for many years as a manager for the Roegelein Credit Union in San Antonio, Texas, and retired as an accountant for Roegelein Provision Company. In retirement, he lived with his sister, Jean, in Salem.

Jean's first job as a teacher was in the two room Canton School. Jean taught for 32 years and retired in the late 1960's. She then worked at the Salem Library for 15 years. She and her brother Mauri loved spending winters in Florida. Jean joined Delta Kappa Gamma International in 1949. She was the first president of Omicron Chapter from Washington County 1956-1958 and was a chapter member of Gamma Rho Chapter. She was also legislative chairperson as well as vice-president of Omicron.

Jean was a long time member of the Salem First Christian Church. She also belonged to Retired Teachers Association, Tri-Kappa, National Historical Society, and DAR. As well as being a charter member of PEO Chapter DB, she was president from 1979-1980.

Memorial Fund

This fund was established by the Board of Directors in 2002 for the many memorials given to the Foundation. For a complete list of all memorials given to the Foundation, please visit our website at www.wccf.biz.



Morris & Martha Bush Rosenbaum Scholarship Fund

Morris & Marty Rosenbaum, former educators at Salem Community Schools, started this scholarship fund to further the education of Salem High School graduates.

Mt. Tabor Christian Church Fund

The Mt. Tabor Church Fund was founded by Morris (Buster) & Betty Clevenger Hoar. This fund was initiated as a permanent endowment that others can add to and the income is to be used as the church body deems appropriate.

Mt. Washington Church of Christ Cemetery

This fund was established by MarjiAnn Souder for the maintenance and historic preservation of the Mt. Washington cemetery.

National City Bank Touch Tomorrow Fund

Striving to be an exemplary corporate citizen, National City Bank started this fund in 2001 to support worthwhile community projects throughout the county. Since the needs of the county will change over time, the bank set up an unrestricted fund in order to be in a position to address those changing needs.

Norton Healthcare/Indiana University Southeast Fund

Norton Healthcare set up this account to establish a nursing scholarship at Indiana University Southeast.

Oliver P. Sizemore Masonic Home Fund

Steve Brewer established this fund in 2007 in honor of Oliver's retirement and his 35 years of public service as a CPA to our community. Oliver was a founding board member for the Foundation. He retired from the board after 10 years of service and then re-joined the board in 2007. He is currently serving as Treasurer.

Operating Endowment Fund

This fund supports the operations of the Foundation.

Paul Ogle/Edward Baugh Fund

Paul Ogle was born in Switzerland County, Indiana. He was the owner of Silgas, a liquefied gas company that sold to residents and businesses throughout Southern Indiana for over 40 years. When Paul died in 1988, the company was sold and the proceeds formed the Paul Ogle Foundation. Paul's vision was to assist the communities in which he made his fortune. To that end, the Paul Ogle Foundation made a \$50,000.00 contribution to the Washington County Community Foundation to help establish this youth philanthropy fund. This fund will be used by the Washington County Youth Foundation to issue youth-directed community service grants to Washington County youth organizations and to teach the youth of Washington County about philanthropy.

Edward Baugh was born in East Chicago, Illinois. He and his family moved to Washington County in 1942, when they purchased a farm. He joined the army when he was seventeen years old and served his country overseas in China, Burma and Egypt. Edward learned many trades over his lifetime. He worked as a farmer, plumber, welder, machinist and tinsmith among other trades. He valued honesty and a strong work ethic. In 1996, Edward contributed \$34,000.00 to establish a youth fund.

Ralph & Faye Motsinger Mahuron Fund

Both Ralph and Faye (Motsinger) Mahuron were lifelong residents of Washington County. Ralph worked in many different jobs. Both Ralph and Faye worked in the Charlestown Powder Plant during World War II. Although they did not have children of their own, they did love children. Ralph also enjoyed politics and was the first Mayor of Salem to be re-elected. Ralph and Faye led a

In memory of John Elliott

Linda Elliott and Mark Leach

In memory of John Prather

Richard and Marcia Grassmyer

In memory of Juanita Russell

Perry and Dorothy Fleenor

In memory of Keith Hattabaugh

Charles and Mary Hunt

In memory of Kenny Hawes

Jon-David and Lindsey Wade-Swift

In memory of Kent Fultz

Democratic Executive Committee

In memory of Ellis Hughes

Mary Kay Fultz

In memory of Cory Williams

Mary Kay Fultz

In memory of Lee John Fultz

Mary Kay Fultz

In memory of Madge Lyles

Bob and Evelyn Holler
Jack and Donna Hedrick
Jeff and Karen Morgan

In memory of Majel Easterday

Morris and Joanne Hudson

In memory of Marjorie Ann Souder

Dale Denny

In memory of Marvin Johnson

Von and Rita Elliott
Wron and Nona Wade

In memory of Mary Ann Stark

Tom and Kim Scifres

In memory of Michelle Riggle

Richard and Marcia Grassmyer

In memory of Mildred Pickens

Von and Rita Elliott
Jim and Judy Johnson
Wron and Nona Wade

In memory of Odetta Purlee

Von and Rita Elliott
Wron and Nona Wade
Jon-David and Lindsey Wade-Swift

In memory of Olive Bagshaw

Jeff and Karen Morgan

In memory of Dorothy Daugherty

Jeff and Karen Morgan



In memory of Patty Goodson
Wron and Nona Wade

In memory of Pearl Wilder
David and Carolyn Beck
Marvin and Sally Hattabaugh
Jim and Judy Johnson

In memory of Rebecca Doyle
Robert and Toby Brewer

In memory of Riley Tomlinson
Burl and Carmelita Jean

In memory of Robert Pepmeier
Sid and Kathy Dye
Burl and Carmelita Jean

In memory of Robert Conwell
Burl and Carmelita Jean

In memory of Robert Wilson
Blue River Coon Hunters Club

In memory of Roberta Byrd
John Jones GM City

In memory of Sandra McCampbell
East Washington Elementary
Teachers and Staff

In memory of Sandy Robertson
Jack and Donna Hedrick

In memory of Steven Nelson
Larry and Jeanette Nelson

In memory of Trent Fordyce
Mary Kay Fultz
Jack and Donna Hedrick
Aaron and Kimi Jackson
Ed and Diane Ratts

In memory of Vance Zink
Gary and Beth Ann Dismore
Jim and Linda Ralston
Marah Marshall
Jennifer Dye

In memory of Alberta Ribelin
Jeff and Karen Morgan

In memory of Virgil Phelps
William and Joy Taylor

In memory of Warren Stewart
Paul and Jane Ann Arnold
John and Diane Carl
Janet Carrington
Marvin and Sandy Clark
Cindy Harcourt
Randall and Sharon Hobson
Mark and Mary Keller
Robert Knox

quiet, conservative lifestyle, but also were active in their community through the Masonic Lodge, the Order of Eastern Star, and their church. They were also interested in the history of Washington County. It was through their conservatism that the Mahurons were able to form a large estate. Through their generosity, the fund now benefits the three area high schools with scholarships, the Washington County Memorial Hospital, Blue River Baptist Church, Salem Baptist Church, Olive Branch Church, Salem Masonic Lodge, Order of Eastern Star, the Senior Citizens Center, Blue River Cemetery, Olive Branch Cemetery, Rodman Cemetery, and the John Hay Center Foundation.

Ralph and Mae Decker Scholarship Fund

Ralph Decker was born in Grayson County, Kentucky. He married Mae Stevenson, who was also from Grayson County Kentucky. Four years after their marriage, Ralph and Mae moved to Louisville where Ralph worked at Porter's Paint Company for seven years. The Deckers bought a farm near Hardinsburg where they raised their two daughters. Ralph sold Moorman feed and was a good friend to all. After Ralph's retirement, he and Mae moved to Salem. Ralph was always interested in children getting a better education than he, as he was unable to go to college. Mae Decker and GleEtta Williams established this fund for Salem High School graduates in the form of scholarships, especially those in the fields of nursing, theology, missionary work or a healthcare related field.

Ranessa Cooper Science Scholarship Fund

Ranessa received financial assistance from the Audrey Mount Educational Loan Program when she was attending college. Because of the impact of Audrey's generosity on her life, Ranessa has now established a college scholarship fund for Salem High School graduates who excel in science.

Raymond, Alma, Cleo and Betty Motsinger Family Fund

This fund was established by Betty Motsinger in demonstration of gratitude for all the support their farming operation received from the community, especially all the middle school and high school boys who worked for them. This fund will provide a scholarship to an Eastern High School graduating senior.

Riley's Place Fund

Riley's Place Playground was built in September, 2001 in memory of Riley Jean Tomlinson. Riley, who died in an accident at the age of 17 months, was the beautiful son of Jennifer and Wade Tomlinson. After his death, his parents were overwhelmed with the kindness of friends and neighbors who wanted to do something in memory of Riley. Jennifer remembered a playground that she and Riley had once visited in Nashville, Tennessee, and the dream of Riley's Place began. Committees were set up and the work to plan the playground and raise the money began. Over 3,000 children in Washington County had an opportunity to turn in ideas for the design of the playground. The playground was completely constructed in 6 days. The first day of the build, September 11, 2001, was one of the darkest days in our nation's history. Building Riley's Place gave the community something positive to focus on when our country was in great despair and grief. In all, over 2,000 people put their skills to work to build the playground. The playground was dedicated on September 16, 2001. One white balloon, in memory of Riley, was released, along with 2001 red balloons, symbolizing all the children who will play on the playground.

Robert L and Clarice J Morris Fund

Robert was born in Gibson Township, the son of the late Emory and Leona Gross Morris. He graduated from Salem High School in 1933. Clarice was born in Pierce Township, the daughter of the late Emerson and Maude Wilson Martin. She graduated from Pekin High School in 1935. Robert and Clarice were married in 1941. Clarice passed away in November, 2002. Bob passed away in 2008.

Robert worked several jobs after high school and served in the military for four years. Fifteen



years after his high school graduation, Robert went to college and earned a bachelor's degree in industrial arts and later a master's degree in vocational education from Indiana State University at Terre Haute. He taught at Jeffersonville High School for 28 years and retired in 1979.

Clarice also attended Indiana State University. She held local teaching positions as well as teaching in Terre Haute (while Robert attended college), New Albany and then finally transferring to Jeffersonville, where she taught until her retirement in 1979.

Robert and Clarice gave the Washington County Community Foundation its first "planned gift" in 1995, a Charitable Remainder Trust, which was funded by the sale of three pieces of property. Hence, the Morris Society is named after them.

Ron and Pam Haendiges Youth Development Fund

Pam has been a teacher at Bradie Shrum for many years and Ron has been involved with youth in our community in many ways. He is currently serving on the Advisory Council for Youth First and the YMCA Board of Directors. In order to continue this tradition of supporting our youth, they have started this fund, which will support the youth in our community forever.

St. Isidore the Farmer Catholic Church Fund

William Harlen established this fund in 2001. Grants from this fund will help St. Isidore the Farmer Catholic Church maintain the Old St. John Catholic Cemetery, where many of Mr. Harlen's ancestors are buried.

St. Patrick Cemetery Fund

This fund was established by the J.P."Bob" Gill Trust for the maintenance and historic preservation of the St. Patrick Cemetery.

Salem Education Foundation Fund

This scholarship fund was established and contributed to by individuals and families that are interested in the future education of Salem High School graduates.

Salem High School Class of 1954 Scholarship Fund

This scholarship fund, established in 2004 by the 1954 class of SHS, will award scholarships to graduating SHS seniors.

Salem High School Class of 1957 Education Fund

The Salem High School Class of 1957 established this fund in 2007 to provide support to Salem Community Schools to support education, with an emphasis on classroom teachers and employees for the purpose of providing innovative, engaging, and meaningful opportunities that are designed to stimulate learning.

Salem Mortgage Touch Tomorrow Fund

Like many business owners, John Mishler wanted to give something back to the community, so he established the Salem Mortgage Touch Tomorrow Fund in 2002. This fund will be used to fund grants for worthwhile community projects through a competitive grant application process.

Salem Presbyterian Church Fund

This fund was originated by Helen Roberson, Dr. Edgar DeJean and Elinor DeJean and added to by Robert E. Boggs. The income is to be used for general purposes at the Presbyterian Church.

Salem - Washington Township Public Library Fund

The Board of Directors and friends of the library initiated this fund. It is to be used in the future for the purchase of books and other peripheral items needed by the library.

Charlene and Gerald Mattingly
Steve and Christa McClure
Jeff and Luellen Miller
George and Margaret Rice
Keith and Nancy Rice
Mary Helen Rippy
Curtis and Karen Scott
Myron and Terri Shouse
Mark and Jana Lee Spurlin
Maxine Stewart
Jim and Carolyn Stiles
The First Baptist Church
Gene and Anita Wesley
Timothy and Teena Wesley

In memory of Wilma Ott

Tom and Libby Kruer

In memory of John Bennett

Tom and Libby Kruer

In memory of Mary Alice McPike

Tom and Libby Kruer

In memory of William Morgan

Jerry and Judy Myers

2009 Apples

An apple for Greg McCurdy

Michael Baird

An apple for Zoma Barrett

Jared Baird
Michael Baird

An apple for Jamie Malloy

The Clem Family

An apple for Mr. Morris

Amanda Moss

An apple for Jenisa Collier

Aryan Ledford

An apple for the Rainbow's End staff

Taylor Bramblett

An apple for Doris Duffy

Olivia Chastain

An apple for Brooke Ingram

Gabby and Dee
Mason Armstrong
Parker Armstrong

An apple for Greg Hopkins

Collin James

An apple for Angela Rosenbaum

SHS Student Body
Paige



Joey Tegarden

An apple for Jim Ralston
SHS Students

An apple for MaryAnne Strather
Chase and Max

An apple for John Heavin
Samantha Bowling
Matthew Wiist

An apple for Pam Moore
Mason Armstrong

An apple for Bethany Hamilton
Parker Armstrong
Hillary and Max

An apple for Andrea Nichols
Parker Armstrong
Raegan Richardson

An apple for Brenda Boling
Beth Armstrong
Kristen Wesner
Emily Rosenbaum

An apple for Anne O'Connell
Beth Armstrong

An apple for Chris Mahuron
Beth Armstrong

An apple for Shari Dalton
Beth Armstrong

An apple for Gail Wisecarver
Beth Armstrong

An apple for Gary Myszak
Presley Goss

An apple for John Calhoun
Malachi Zink

An apple for Donna Brewster
Glen Worley

An apple for Judy Saunders
Maleah Zink

An apple for Beth Voyles
Gabriel Porter

An apple for Judy Nice
Gabriel Porter

An apple for Beth Deaton
Amanda Porter

An apple for Shirley Voyles
Amanda Porter

Salem Schools Giving Tree Fund

Two funds, established by Salem Community Schools employees, will provide grants to Salem Community Schools teachers for innovative classroom projects. School employees have made direct contributions to these funds as well as participating in a payroll deduction program.

Salem True Value Touch Tomorrow Fund

Bob Strange established this fund in 2002, in order to facilitate the continuing support that Salem True Value gives to the community. By creating this fund, Salem True Value will be able to support grants to the community now and forever.

Smedley Scholarship Trust Fund

Lawrence "Corky" Smedley was born on March 28, 1928 in a house on West Market Street in Salem, Indiana. He was a thirty-second degree Mason and a DeMolay sponsor. He loved to read and enjoyed the stage and musicals. He was a member of the First Christian Church. He had three children and two grandchildren at the time of his death in 1986. Corky will always be remembered for his love of horses, which started at an early age. As a young boy, he taught his pony to untie the ribbons in the hair of his younger sister. Thus started his long relationship with horses that would last the rest of his life. For Corky, there is an old saying that holds especially true: "There is nothing better for the inside of a man than the outside of a horse." Corky's friends, 4-H co-leaders, and loved ones, by establishing this scholarship fund, will help future generations of Washington County residents understand the meaning of that old saying.

Stevens Memorial Trust Fund

This trust was established in 1970 by Warda Stevens Stout when she financially assisted in building the Stevens Museum. This fund is to be used for capital improvements at the museum and can be added to by any contributor.

Sugar Creek Christian Church Fund

Roy and Mae Lee established this fund as a permanent endowment that others can add to as well. The income is to be used as the church body deems appropriate.

Todd and Beth Armstrong Youth Development Fund

Because of their passion for youth, Todd and Beth established this fund to support our youth and make our community a better place to raise children.

Tony and Jeanette Nolan Touch Tomorrow Fund

Tony and Jeanette ran a successful hardware store for many years in Salem. Upon the sale of their business, they wanted to give back to the community in which they operated their business for so many years. Their unrestricted gift funded this Touch Tomorrow Fund, which will be used at the Board of Directors discretion to improve the quality of life in Washington County for generations to come.

2004 Board of Directors Gift for Tomorrow Fund

This fund was established in 2004 by the Board of Directors. It is to remain an acorn fund for 100 years and, as future board members continue to add to it, this fund will grow into a very sizable fund by 2104, at which time it will be used for discretionary grants.

Veteran's Memorial Maintenance Fund

Robert and Clarice Morris established this fund for the maintenance of the Veteran's Memorial.



W. Frank Cole, Jr. and Joanne (Jo) Puckett Cole Scholarship Fund

Frank and Jo Cole established the fund to award graduating county seniors that maintained a GPA of 3.0 – 4.0. Frank and Jo are both retired educators that understand the value of continuing education.

Wade-Swift Youth Development Fund

Lindsey and J.D. have been involved with the youth of our community for many years. They have decided to establish an endowed fund to support our youth long after they are gone.

Warren and Maxine Stewart Scholarship Fund

Maxine, and her two daughters, Tina Wesley and Cindy Harcourt, established this fund in memory of Warren upon his death in 2009. Warren was a Baptist minister for over 30 years, serving several churches throughout southern Indiana. Warren was a well known singer and banjo player, therefore the scholarship fund established will benefit students pursuing a degree in theology or music.

Washington County Aquatics Fund

Richard and Marcia Grassmyer established this fund in 2007 to help the youth of Washington County advance their aquatic skills.

Washington County Community Foundation Touch Tomorrow Fund

This is the largest fund in the Foundation. The income from this account is used for grant making to non-profit organizations in Washington County either by application or by direction of the Board of Directors.

Washington County Family YMCA Fund

This fund was established by David and Carolyn Beck, David Brown, Bonnie Davis, Victor and Mary Dufour, Ernie and Dottie Gravatt, Jim and Judy Johnson, Jack and Carol Mahuron, Don Martin, Tom and Kim Scifres, and Bob and Carol Strange. The purpose is to provide grants for operational expenses of the YMCA.

Washington County Fund for Education

The purpose of this fund is to promote and strengthen education for individuals of all ages in Washington County.

Washington County Food Bank Fund

This fund was established by the J.P. "Bob" Gill trust to provide support to the Food Bank.

Washington County Historical & Pioneer Cemetery Fund

This fund was established in 2003 to provide support to the Washington County Historical and Pioneer Cemetery Association, a non-profit organization dedicated to the maintenance and historical preservation of local cemeteries. This fund currently supports Hiestand, Olive Branch, Norris, Peugh, and Wilson-Mead cemeteries.

Washington County Historical Society Depot Fund

Salem's role in the 1847 organization of the railroad that served much of the State of Indiana is commemorated at The Depot, the railroad museum at the John Hay Center. Memorabilia devoted to the New Albany & Salem Railroad and the Monon Railroad and a large HO scale model depicting the Monon through Washington County in the period 1957-1964 are main features of the museum. Funded with grants and donations, The Depot was constructed by students from Salem and Eastern High Schools who were members of the Building Trades Class at Prosser School of Technology, New Albany. During the two years of construction, 39 students were involved in the project. The Depot is owned by the Washington County Historical Society and is operated by

An apple for Bob Setser

Parker Armstrong

An apple for Jon-David Wade-Swift

Parker Armstrong

An apple for Tammy Motsinger

Jack Armstrong

An apple for Monika Spaulding

Jack Armstrong

An apple for Vanessa Freel

Mason Armstrong
Reagan Wade-Swift

An apple for Duane Davis

Reagan Wade-Swift

An apple for Jill Little

Reagan Naugle

An apple for Linda Ralston

Luke Noel

An apple for Misty Jones

Konnor Wallace

An apple for Mrs. Wells

Raegan Richardson

An apple for Robin Deaton

Macey Roll

An apple for Stacey Gilbert

Trale Howard

An apple for Mr. Nichols

Sidney Smith

An apple for Barry Clements

Emily Rosenbaum

An apple for Pam Haendiges

Reagan Wade-Swift

An apple for Rebecca Crane

The Porters

An apple for Terri Smith

The Porters

An apple for Regina Sabens

Hays Ferriell

2009 Honorariums

In honor of Jack and Gene Hedrick

David and Carolyn Beck
Jerry and Judy Myers

In honor of JoAnn Carty

Cheryl Gumaelius

In honor of Anne Terrell

Awareness Washington County Board

**In honor of
Bryan and Liza Grosvenor**

Bruce and Linda Grosvenor

In honor of Buri and Carmelita Jean

Sid and Kathy Dye
Jean's Extrusions Employees
Bill Reister and Marjorie Morris
Pat Heiny

In honor of Cheryl Lee

Bill Reister and Marjorie Morris

In honor of Dan Mullins

Jim and Linda Ralston

**In honor of the hospitality of
Dr. Leonard Chastain**

Charles and Mary Hunt

**In honor of Ernie and Carolyn Baird
on their 50th anniversary**

Robert and Jane Brewer

**In honor of George
and Jan Richardson**

Richard and Marcia Grassmyer

**In honor of Dan and
Sherry Richardson**

Richard and Marcia Grassmyer

In honor of Susan Record

Richard and Marcia Grassmyer

In honor of Phyllis West

Richard and Marcia Grassmyer

In honor of Jeff Souder

Jim and Judy Johnson
Jon-David and Lindsey Wade-Swift

In honor of John Mead

Jon-David and Lindsey Wade-Swift

In honor of Jim Ralston

Walter and Cathy Huey

In honor of John and Sara Calhoun

Greg and Cynthia McCurdy

**In honor of Stephen
and Sandra Riggle**

Greg and Cynthia McCurdy

In honor of John and Paula Jones

Ric and Deb Wrye

volunteers. Operational expenses are covered by donations, admissions, gift shop income and rentals for meetings, receptions, etc. The WCHS Depot Fund was established to help cover operating and maintenance expenses. The fund was started with donations from Bob Boggs, Jack and Carol Mahuron, Cecil J. and Martha S. Smith, Roger L. and Sarah Ann Voyles and Robert and Clarice Morris.

Washington County Scholarship Fund

The WCCF Board of Directors established this fund to provide college scholarships to Washington County residents.

Whiskey Wilson Humane Society Fund

Whiskey Wilson was the beloved pet of Donovan and Jean Wilson. They adopted him from the Humane Society when he was around one and one half years old. Although Jean did not want an animal in the house, Whiskey very quickly changed her mind. His unconditional love and his character made him almost an instant part of their family. They took him everywhere with them, including Florida, Massachusetts and Montana. Donovan and Whiskey took daily walks up until Whiskey's death. Jean Wilson is one of the Foundation's founding board members. Her knowledge and understanding of the foundation led to the establishment of this fund. Upon Whiskey's death, the Wilsons decided to set up a memorial fund to honor Whiskey and to help the Humane Society care for more animals like Whiskey, before he went to live with the Wilsons. Now anyone can donate to this fund in honor of their own pets.

William Clarence and Martha Branaman Fund

Both Martha and Clarence Branaman were natives of Washington County. Clarence was born in Jefferson Township, the son of W. Floyd Branaman and Alice Stewart Branaman. He was a 1920 graduate of Salem High School. He attended Purdue University in Lafayette, Indiana, and graduated with a degree in agriculture in 1924. In 1925, he became a teacher of agriculture and Future Farmers of America sponsor at Salem High School. He was a pioneer in introducing scientific agriculture to Washington County, and he very successfully farmed a large acreage of land north, northeast, and west of Salem.

Martha Smith Branaman was born in Salem, Indiana in 1910. She was the daughter of Ford A. Smith and Florence Blanche Munkelt Smith. Her father was the founder of Smith Cabinet Manufacturing Company. Martha graduated from Salem High School in 1928. She met Clarence Branaman while at Salem High School, and they married in December 1928. They had two children - David Branaman (1932) of Louisville, KY and the former President of Salem Child Craft Industries, Inc. and Martha Ann Branaman Gran (1937) of Indianapolis, IN. During the 1990s, Martha Branaman contributed the proceeds of the Baynes and Lyons farms that she and Clarence had owned to both the Washington County Community Foundation and the Christian Church Foundation. By placing the two Branaman farms in a charitable remainder trust, Martha ensured a continuing source of funding for charitable interests that she was able to specify. Additionally, the charitable remainder trust provided a source of personal income for Martha until her death in August 1997.

William O. Martin Math Prize Fund

William O. Martin was born in 1904 in Pierce Township. William passed a test as a senior that allowed him to begin teaching grades one through eight following one summer at college. He later continued his education and received a master's degree from Indiana University in 1949. His favorite subject was mathematics. During his 47 years of teaching, he also served as principal and coach at East Washington High School. As a coach, he never had a losing season and he introduced the school motto, "All for one and one for all." This eventually led the school to adopt the Musketeer as the mascot and royal purple and bright gold as the school colors. William married Elizabeth Hoyt ten years after graduating high school. One of his accomplishments after retirement was to develop a popular blend of apple cider. He also helped get electricity and more updated phone lines into the eastern part of the county. William was also involved



with the East Washington Lions Club, the John Hay Society Sons of the American Revolution, his church and the building fund committee for the Washington County Memorial Hospital. William O. Martin's children established this fund to honor their father and reward an Eastern High graduating senior who has excelled in mathematics.

The Women's Fund

The purpose of this fund is to provide opportunities, encouragement, knowledge and hope to women and girls. The Women's Fund was established in 2007.

Wonder Valley Fund

The Wonder Valley Church Camp established this fund for the purpose of maintaining the camp and for future building purposes. The camp services several counties in our catchment area.

For complete biographies on our donors, please visit our website at www.wccf.biz.

New Funds Established in 2009

Anne Terrell Delta Kappa Gamma Scholarship Fund

In celebration of her birthday, Anne's husband, Butch, established this fund in honor of Anne's many years of serving as a teacher and middle school administrator. Since Anne is an active member of Delta Kappa Gamma, she wanted the college scholarship to be awarded in conjunction with this organization.

Bob and Carol Strange Touch Tomorrow Fund

Bob established this fund in loving memory of Carol in 2009. This fund will award grants in their name for generations to come, thereby keeping their spirit of community service alive.

Donivan Jack and Carol Baker Mahuron IUS Scholarship Fund

Jack and Carol established this fund to award a scholarship to a Washington County high school graduate attending Indiana University Southeast.

Independent Order of Odd Fellows Lodge #67 Fund

As it became apparent to local members of the IOOF #67 that their numbers were dwindling and their ability to remain a viable organization was becoming nearly impossible, the members decided that they wanted the local assets, which they had accrued over the past several decades, to stay in Washington County. So, after much time and effort, the local Lodge received permission to keep the funds local, by contributing them to the Washington County Community Foundation. The lodge established a fund in the Foundation to benefit the John Hay Center Foundation. This way, the IOOF Lodge #67 can continue their work of supporting our community long after the members are gone.

John M. Colglazier Touch Tomorrow Fund

In 2009, the former employees of the State Bank of Salem held a reunion. At this reunion, they decided to collect money to honor former bank President, John Colglazier. "He had such compassion for each person he dealt with, whether it was a customer or an employee of the bank," remembered Jeanette Nolan. "I think it would be safe to say that we all learned a lot of valuable lessons from John during our different tenures at the bank."

In honor of Kalen Carty Kemker
Cheryl Gumaelius

In honor of Lane Thomas Voyles
Shirley Voyles

In honor of Marie Lowery
Bob and Evelyn Holler

In honor of Mindy Gunn
Stephanie Ferriell
Bill Reister and Marjorie Morris

In honor of Rose Anderson
Bill Reister and Marjorie Morris

In honor of Saralee Shields
Margaret Gasaway

In honor of Mary Rexroat
Margaret Gasaway

In honor of Tawny Bottorff
Hays Ferriell

In honor of the birth of Zoey Jane
Ranessa Cooper

In honor of the mentorship of Dr. George Argus
Ranessa Cooper

In honor of the 25th anniversary of Mr. and Mrs. Clyde Clark
Ranessa Cooper

In honor of the Awareness Washington County Board
Bill Reister and Marjorie Morris

In honor of the SOAR! Board
Bill Reister and Marjorie Morris



Reasons to Give

Making charitable contributions is an art - a creative process that adapts to the changing needs and wishes of the donor. Planned giving enables a donor to arrange charitable contributions in a way that maximizes his or her personal objectives while minimizing the after-tax cost.

Depending on the asset given and the gift arrangement selected, a donor can generally expect to obtain some or all of the following benefits:

- Fulfill philanthropic goals
- Reduce income tax through a deduction for the gift
- Avoid capital-gain tax on gifts of long-term appreciated property
- Retain a stream of payments for life of the donor and for other beneficiaries
- Increase spendable income
- Eliminate federal estate tax on property passing to charity upon the donor's death
- Reduce costs and time in estate settlement
- Create a permanent legacy

Larry and Rita Turpen Scholarship Fund

The Larry and Rita Turpen Scholarship fund was established by Rita and her family in 2008. In honor of Larry and Rita's devotion to academics and athletics, this fund represents their continued contribution and impact on our county's youth. Designated for a Salem High School graduate, this scholarship is to be presented to a student athlete pursuing a degree in education.

Maurice E Berkey Jr & Jean C Berkey Memorial Scholarship Fund/First Christian Church

From 1942-1945, Mauri (as his friends called him) served in the Army. He served under General George Patton and received Commendations signed by General Patton and well as General Omar Bradley. Maars as a manager for the Roegelein Credit Union in San Antonio, Texas, and retired as an accountant for Roegelein Provision Company. In retirement, he lived with his sister, Jean, in Salem.

Jean's first job as a teacher was in the two room Canton School. Jean taught for 32 years and retired in the late 1960's. She then worked at the Salem Library for 15 years. She and her brother Mauri loved spending winters in Florida. Jean joined Delta Kappa Gamma International in 1949. She was the first president of Omicron Chapter from Washington County 1956-1958 and was a chapter member of Gamma Rho Chapter. She was also legislative chairperson as well as vice-president of Omicron.

Jean was a long time member of the Salem First Christian Church. She also belonged to Retired Teachers Association, Tri-Kappa, National Historical Society, and DAR. AQs well as being a charter member of PEO Chapter DB, she was president 1979-1980.

Robert L and Clarice J Morris Fund

Robert was born in Gibson Township, the son of the late Emory and Leona Gross Morris. He graduated from Salem High School in 1933. Clarice was born in Pierce Township, the daughter of the late Emerson and Maude Wilson Martin. She graduated from Pekin High School in 1935. Robert and Clarice were married in 1941. Clarice passed away in November, 2002. Bob passed away in 2008.

Robert worked several jobs after high school and served in the military for four years. Fifteen years after his high school graduation, Robert went to college and earned a bachelor's degree in industrial arts and later a master's degree in vocational education from Indiana State University at Terre Haute. He taught at Jeffersonville High School for 28 years and retired in 1979.

Clarice also attended Indiana State University. She held local teaching positions as well as teaching in Terre Haute (while Robert attended college), New Albany and then finally transferring to Jeffersonville, where she taught until her retirement in 1979.

Robert and Clarice gave the Washington County Community Foundation its first "planned gift" in 1995, a Charitable Remainder Trust, which was funded by the sale of three pieces of property. Hence, the Morris Society is named after them.

Robert L and Clarice J Morris Touch Tomorrow Fund

Warren and Maxine Stewart Scholarship Fund

Maxine, and her two daughters, Tina Wesley and Cindy Harcourt, established this fund in memory of Warren upon his death in 2009. Warren was a Baptist minister for over 30 years, serving several churches throughout southern Indiana. Warren was a well known singer and banjo player, therefore the scholarship fund established will benefit students pursuing a degree in theology or music.



Here are ways you can make every year your Year of the Donor.

| Gift | How and Why |
|---|---|
| OUTRIGHT GIFTS | |
| Cash | Write check, or use credit card. Easy to make; income tax charitable deduction for full value of gift (subject to 50% of Adjusted Gross Income limit). |
| Securities | Typically, transfer to charity an appreciated asset (stocks, bonds) held for more than one year. Income tax charitable deduction for full fair market value; no capital gains tax payable on asset's appreciated value. |
| LIFE INCOME GIFTS | |
| Charitable Gift Annuity | Assets (usually cash or securities) donated to charity in exchange for fixed annuity payments. Current income tax charitable deduction for gift portion of donation; part of payments may be tax-free return of principal; capital gains tax on transfer spread over donor's life expectancy. |
| Charitable Remainder Annuity Trust (CRAT) | Set up trust that pays specific annual benefit for life of beneficiary(ies), or for a period up to 20 years; trust property transferred to charity when donor benefits end; usually funded with cash or securities. Income tax charitable deduction; possibly avoids capital gains when funded with long-term appreciated property. |
| Charitable Remainder Unitrust (CRUT) | Similar to CRAT, except income amount varies each year as trust assets are re-valued; may be funded with cash, securities, and other assets. Same benefits as CRAT. |
| REVOCABLE GIFTS | |
| Bequest | Use will to direct property to a charity at your death. Estate tax charitable deduction for value of gift; donor retains lifetime use and control of property intended as bequest gift; most popular form of planned gift. |
| Retirement Plan Assets | Charity named as beneficiary of retirement plan assets (other arrangements also possible). May have significant estate planning benefits, because income in respect of a decedent (IRD) is taxable to heirs, but not to charities. |
| OTHER GIFTS | |
| Real Estate | Make gift through outright transfer of ownership, through trust, or through will. Arrangements and benefits vary. Possible income tax charitable deduction, possible capital gains tax savings, possible estate tax deduction. |
| Retained Life Estate | A form of real estate gift in which donor makes gift of real estate but retains right to live in property for remainder of his or her life. Income tax charitable deduction based on present value of remainder interest. |
| Charitable Lead Trust (CLT) | Charity receives annual trust income; trust principal reverts to donor or beneficiaries at end of trust term. Qualified CLT may qualify for a gift tax or estate tax charitable deduction, and sometimes income tax charitable deduction depending on type of CLT. |
| Life Insurance | Give life insurance policy to charity, or designate charity as beneficiary of policy, or use policy as wealth replacement tool for a CRAT or CRUT. Income tax charitable deduction for donated policy. |

We recommend that you consult your professional advisor(s) for specific information as it pertains to you.



Statement of Financial Position

Year Ended December 31, 2009

Assets

Current Assets

| | |
|-----------------------------------|---------------------|
| Cash and cash equivalents | \$48,941 |
| Certificates of deposit..... | \$51,522 |
| Investments | \$10,685,118 |
| Scholarship loans | |
| Receivable, net | \$2,500 |
| Prepaid expenses | \$4,325 |
| Total Current Assets | \$10,792,406 |

Equipment

| | |
|---|------------------|
| Property and equipment..... | \$553,375 |
| Less accumulated depreciation and amortization | \$124,310 |
| Net Equipment..... | \$429,065 |

Other Assets

| | |
|------------------------------------|--------------------|
| Cash Value of Life Insurance | \$14,854 |
| Restricted Investments..... | \$2,704,963 |
| Total Other Assets..... | \$2,719,817 |

TOTAL ASSETS **\$13,941,288**

Liabilities & Net Assets

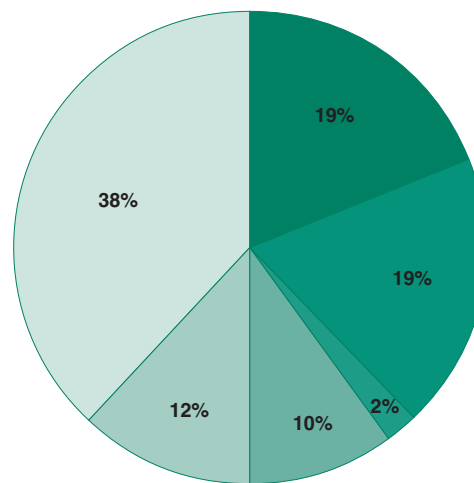
Liabilities

| | |
|-------------------------------------|--------------------|
| Grants Payable..... | \$16,400 |
| Annuities Payable..... | \$299,207 |
| Contributions Held for Others | \$2,704,963 |
| Total Liabilities | \$3,020,570 |

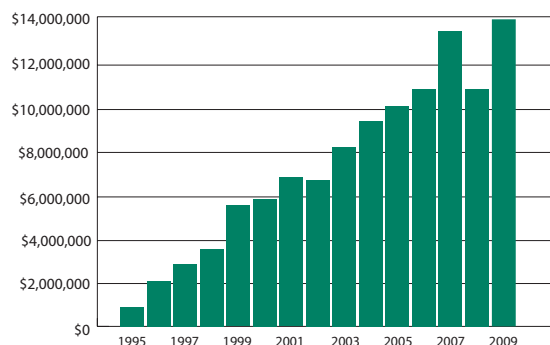
Net Assets

| | |
|-------------------------------|---------------------|
| Unrestricted..... | \$10,817,418 |
| Temporarily Restricted | \$30,785 |
| Permanently Restricted..... | \$72,515 |
| Total Net Assets | \$10,920,718 |

TOTAL LIABILITIES & NET ASSETS..... **\$13,941,288**



- Agency
- Designated
- Field-of-Interest
- Operating
- Scholarship
- Unrestricted



Audit, 900 and 990T (when appropriate) performed by Monroe Shine, Inc. These reports are available for review upon request at the Washington County Community Foundation office.

The staff of the WCCF has made every attempt to ensure the accuracy of this report. For any errors or omissions, we humbly apologize.